

# **NHCRWA Board Meeting**

## **MAY 3, 2021**

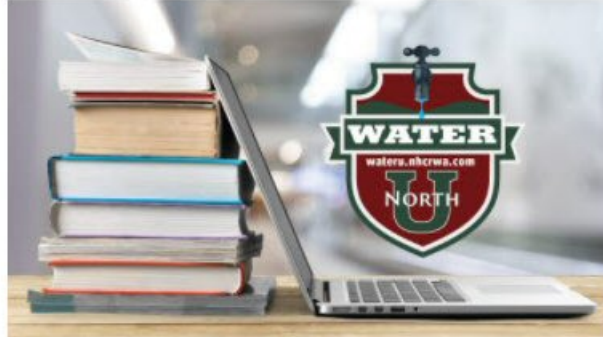


- 
- **Message from the President**
  - **Board Member Comments**
  - **Public Comments**







[Home](#)[About WATERU](#)

## WELCOME TO WATER U

**WATER U North** is a virtual classroom that features FREE "courses" on critical water issues that affect utility districts and residents in the North Harris County Regional Water Authority. WATER U North allows participants to dive into the topics that interest them the most

PICK A COURSE BELOW TO GET  
STARTED.



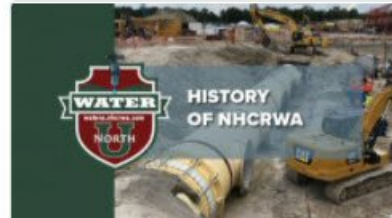
COMPOSTING

[See more...](#)



IRRIGATION

[See more...](#)



THE HISTORY OF NHCRWA

[See more...](#)



SUBSIDENCE

[See more...](#)



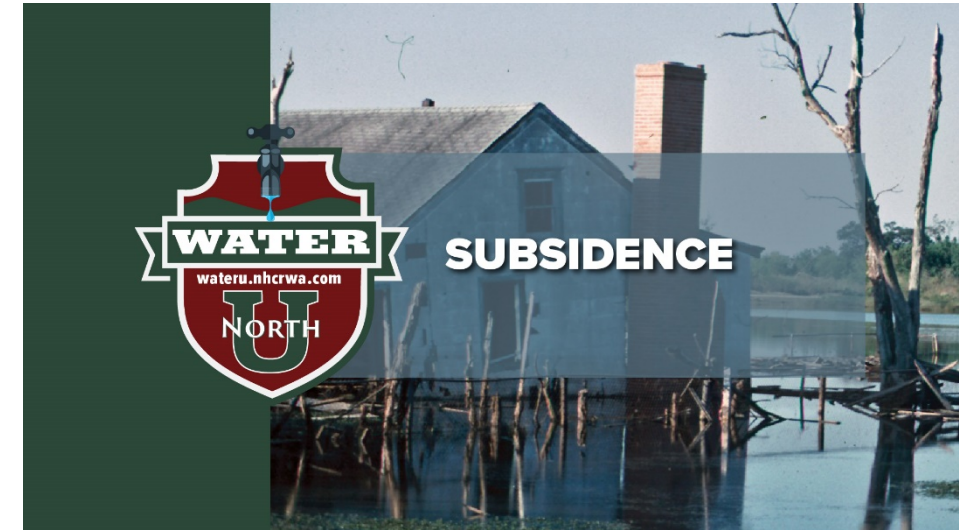
WHY IS MY WATER BILL SO HIGH?

[See more...](#)



TEXAS WATER DEVELOPMENT  
BOARD

[See more...](#)



# ONLINE NOW!







**HISTORY**



**TWDB**



**REGIONAL PROJECTS**



**COMPOSTING**



**REUSE**



**IRRIGATION**



**CONSERVATION**



**SUBSIDENCE**



<https://wateru.nhcrwa.com>



# GENERAL MANAGER'S REPORT

- **Report on miscellaneous administrative matters, including correspondence received from constituents of the Authority;**
- **Update on status of Surface Water Conversion Program; and**
- **Update on 2010-2025 Water Distribution and Transmission System;**



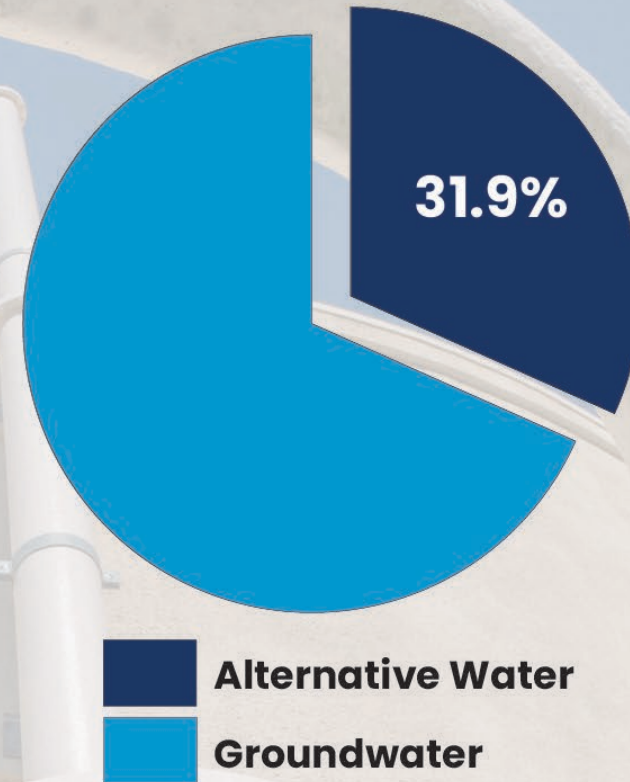
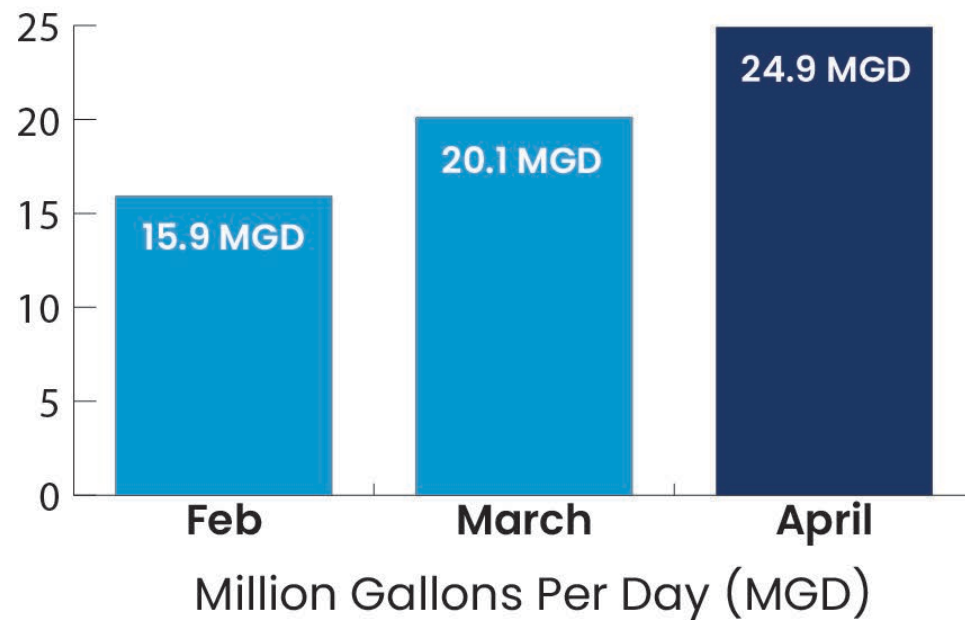


# **PROGRAM MANAGER'S REPORT**



# Surface Water Conversion

**NHCRWA delivered 24.9 MGD of treated alternative water in April 2021**





The background image shows a large industrial facility. On the left is a tall, light-colored cylindrical tank with a complex metal access structure featuring ladders and platforms. To the right is a single-story brick building with two large white roll-up doors. In front of the building, there are large white pipes and two white pickup trucks parked on a paved area. The sky is clear and blue.

# Surface Water Conversion

- **For Permit Year 2019 – 2020**  
*(Dec. 1, 2019 through Nov. 30, 2020)*  
**the Authority accumulated 530.7 million gallons of over-conversion credits.**



# 26 Active Projects

- ✓ **9 In or Near Construction**
- ✓ **14 In Final Design & ROW Acquisition**
- ✓ **2 Routing Study and Preliminary Engineering**
- ✓ **1 On-Hold (6B-3R)**





# Project 28F

Proposed water lines to Emerald Forest UD Water Plants No. 2 and No. 3, Mills Road MUD Water Plant No. 1 and No. 2, Cypress Creek UD Water Plant No. 1, and Harris County MUD No. 230 Water Plant



NTP issued to contractor,  
March 2021



Contractor completed  
setting up field office.



Clearing/grubbing complete  
from Woodedge Rd to  
Cypress North Houston Rd.

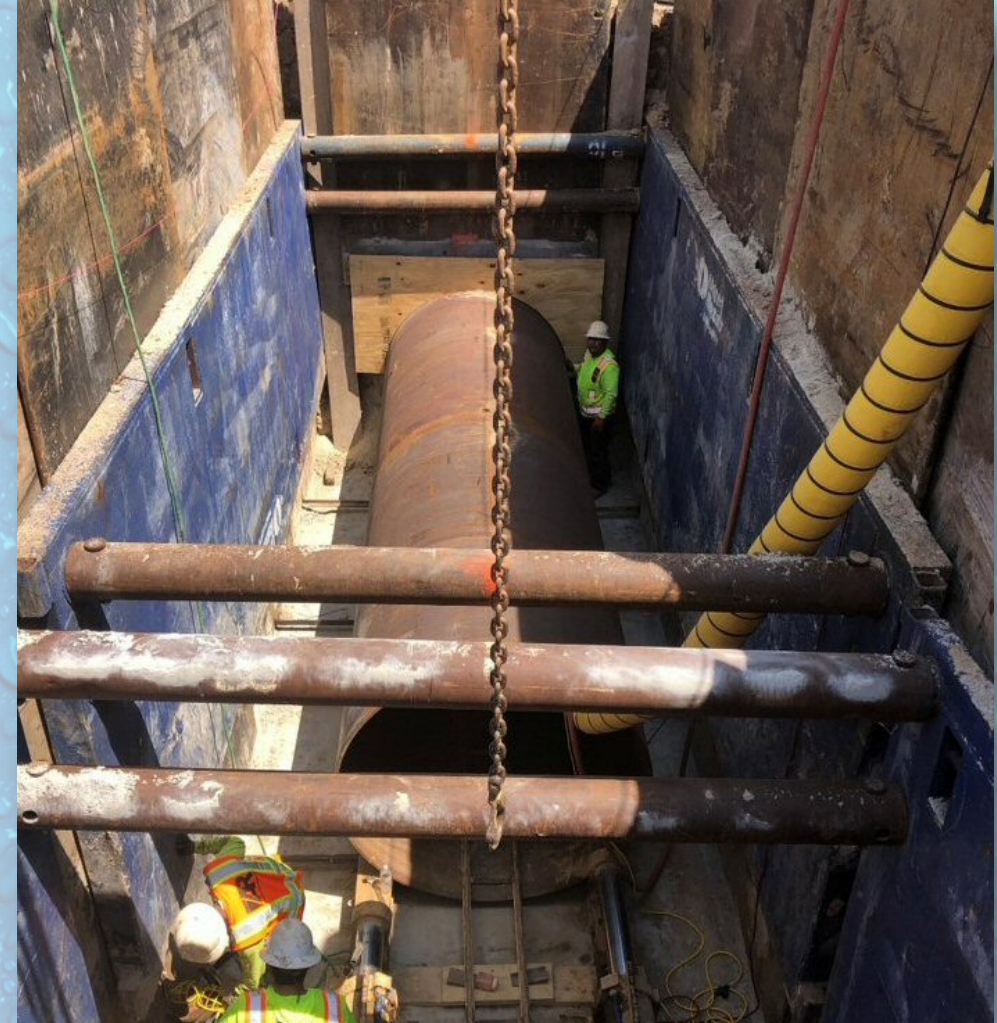
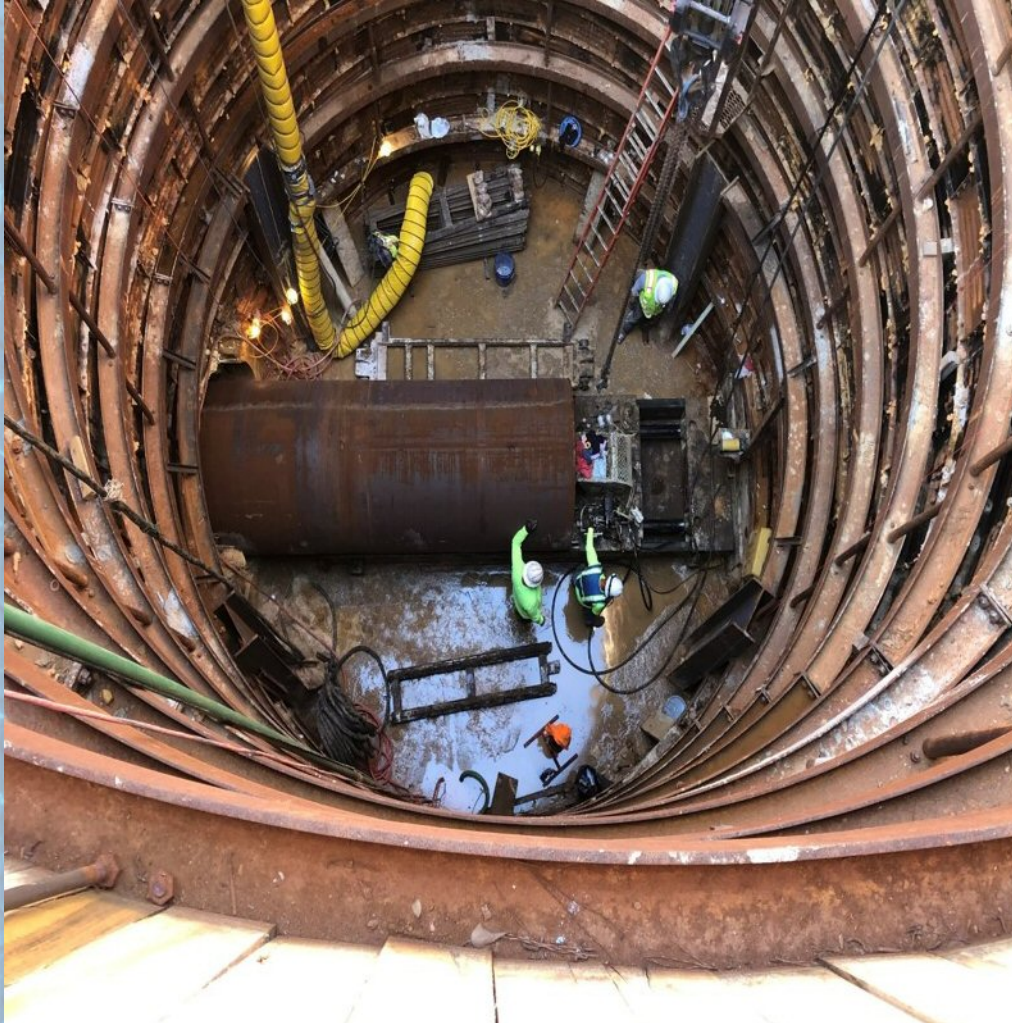


# Project 28B ~ 60-inch and 54-inch Water Line Along Grant Road and Copeland Road





# Project 28B ~ 60-inch and 54-inch Water Line Along Grant Road and Copeland Road





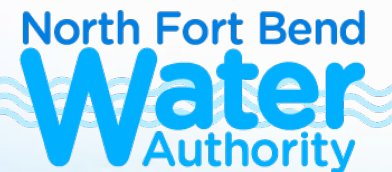
# Tunnel under Cypress Creek





# Regional Water Projects

- Luce Bayou Interbasin Transfer Project
- Northeast Water Purification Plant
- Northeast Transmission Line





# Luce Bayou Interbasin Transfer Project



**P302 MOTOR TESTING**



**FINAL PIPE  
COATINGS**





# Luce Bayou Interbasin Transfer Project



**SCADA REMOTE OPERATION OF VALVES**



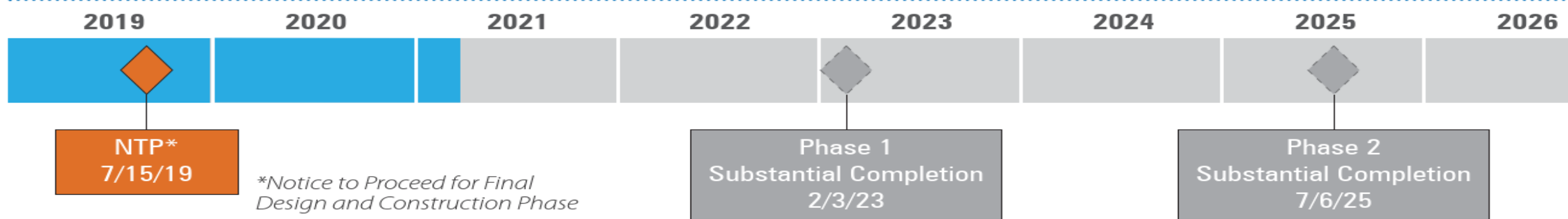
# Luce Bayou Interbasin Transfer Project

**DUAL 96-INCH PIPELINES – PRF – WORK COMPLETE**





# SCHEDULE STATUS



## KEY PERFORMANCE INDICATORS (KPI)

Status through March 2021

| KPI                       | Description                                   | Target       | Status | Trend (from last update) | Notes   |
|---------------------------|---|--------------|--------|--------------------------|---|
| Phase 1 Completion        | Phase 1 (80 MGD) Substantial Completion date  | Feb 3, 2023  | ●      | ↑                        | Progress schedule shows 11 days negative float. HWT working to rectify.   |
| Phase 2 Completion        | Phase 2 (240 MGD) Substantial Completion date | July 6, 2025 | ●      | ↓                        | Progress schedule shows 16 days negative float. HWT working to rectify.   |
| D-B Financial Performance | D-B Authorized Amount vs. July 2019 Budget    | \$1.765B     | ●      | —                        | Expenditure status based on base GMP and other amounts as defined in Exhibit F of Amended and Restated Agreement. |
| Safety                    | Number of reportable events                   | 0            | ●      | —                        | 3.962M hours to date. 9 OSHA recordable incidents. 0 lost time incidents.   |

- Actual Ahead of Target
- Actual Nearing Target
- Actual Behind Target
- ↑ Status Improved From Last Period
- ↓ Status Declined From Last Period
- Same as Last Briefing







# Northeast Transmission Line (“NETL”)

- All segments under construction or completed
- All projects on time, on task and on budget.

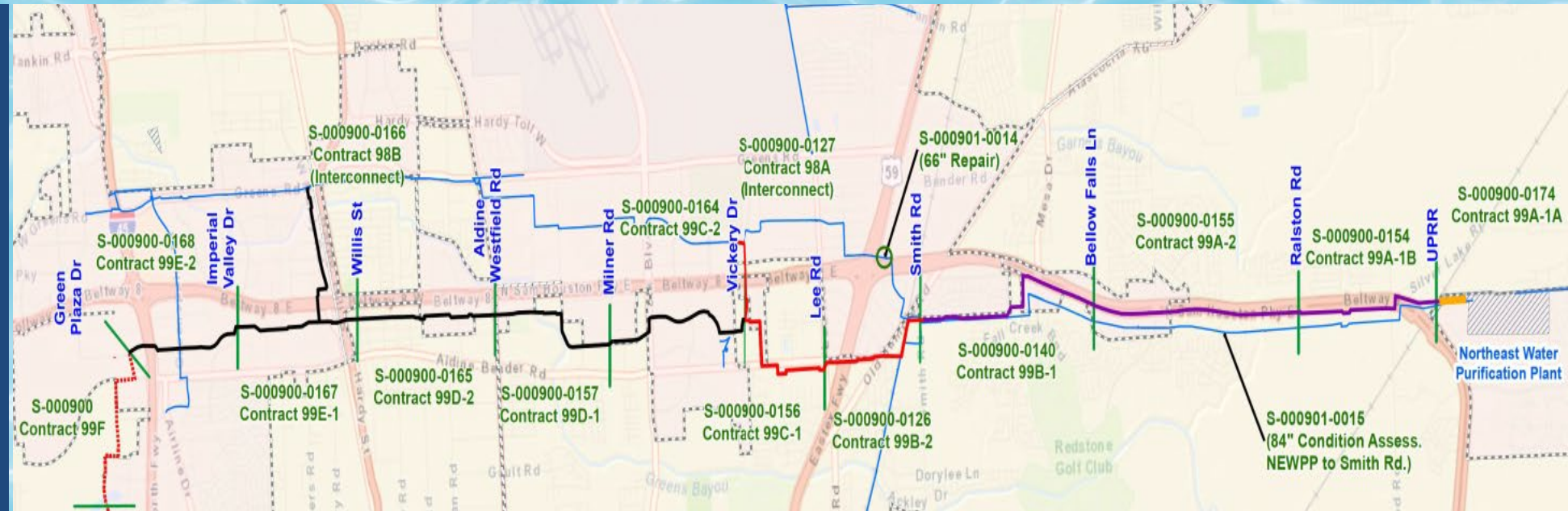
Approx. 16.5 miles

1 -- 120 inch

10 – 108 inch

1 – 66 in. interconnect

1 – 54 inch interconnect





# Questions ?



# ATTORNEY'S REPORT





# APPROVAL OF MINUTES





- **Accept Agreed-Upon Procedures Report prepared by McCall Gibson Swedlund Barfoot, PLLC related to the audit report for the fiscal year ending December 31, 2020;**





- **Review and approve audit report for the fiscal year ending December 31, 2020, and authorize filing of same;**





# MARCH FINANCIAL REPORT







# Financial Report Summary

## As of March 31, 2021

### Total Enterprise Fund Balance

# \$1,126,960,059.35

|  |           |                         |
|--|-----------|-------------------------|
| CAPITAL FUNDS                                | \$        | 649,604,102.92          |
| INTEREST & SINKING AND DEBT SERVICE RESERVES | \$        | 162,082,394.24          |
| COVERAGE AND IMPROVEMENT FUNDS               | \$        | 284,883,345.21          |
| OPERATING FUNDS                              | \$        | 30,390,216.98           |
| <b>ENTERPRISE FUND BALANCE</b>               | <b>\$</b> | <b>1,126,960,059.35</b> |





# Financial Report Summary

## **Reports included:**

- ~ Balance Sheet**
- ~ Statements of Revenues and Expenditures, Investment Reports, Pledged Securities Report, Actual General Operating Budget Comparison, Operating Budget Planning Report, and Reports of Pumpage Fees received and delinquent.**



# Financial Report Summary

- Consultant and expense checks
- Approval of the Financial Report
- Authorization for payment of bills





# Financial Report Summary

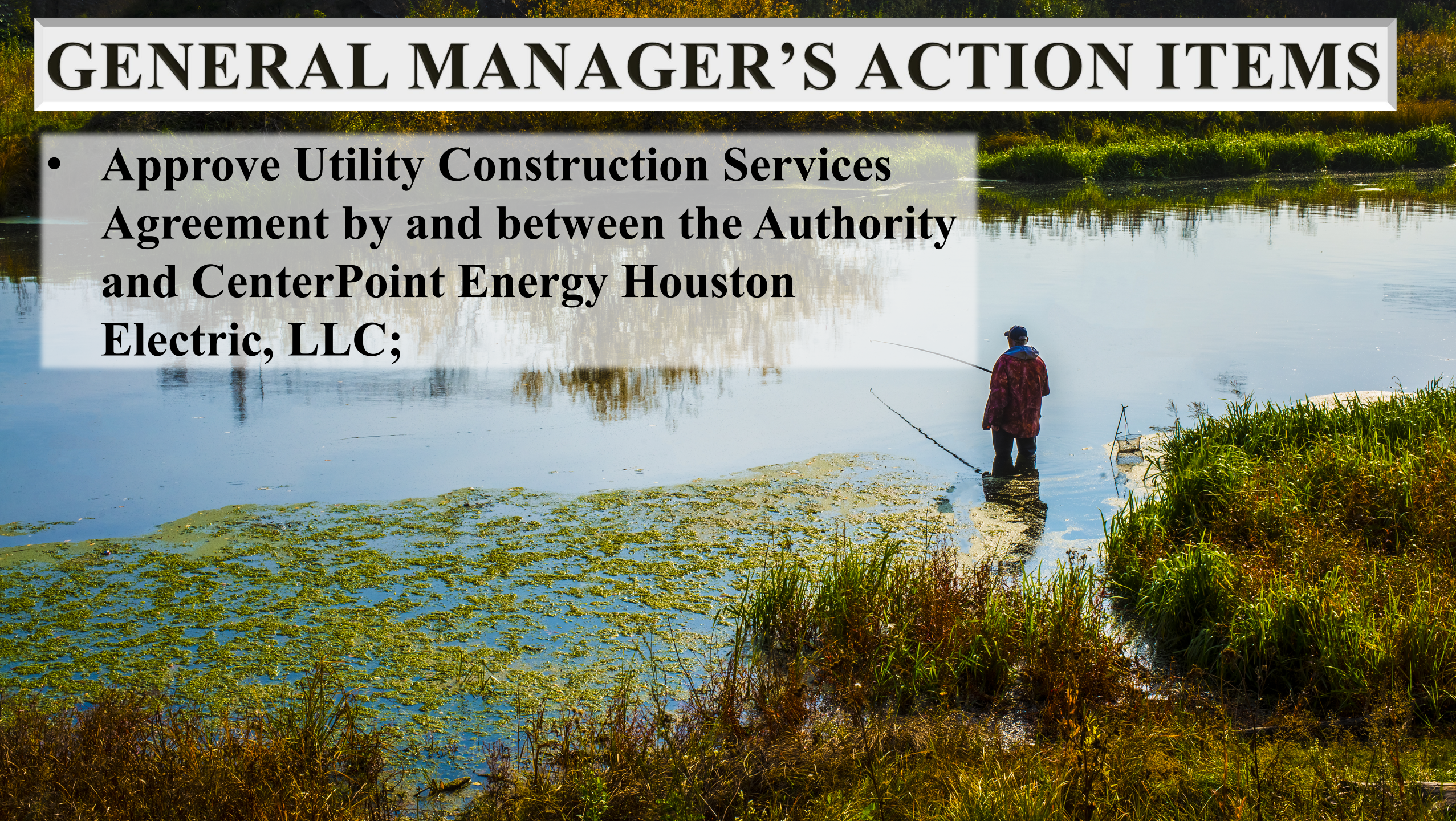
- Authorize Finance Director to update continuing disclosure information





# GENERAL MANAGER'S ACTION ITEMS

- **Approve Utility Construction Services Agreement by and between the Authority and CenterPoint Energy Houston Electric, LLC;**





# GENERAL MANAGER'S ACTION ITEMS

- **Designate member voting representative for Association of Water Board Directors – Texas;**





**Confirm next regular  
meeting date on Monday,  
June 7, 2021, at 6:00 p.m.**







# Public Comments





**Please use water  
wisely!**

**You never know  
when a friend  
will need it!**



**AGENDA**  
**NORTH HARRIS COUNTY REGIONAL WATER AUTHORITY**

The Board of Directors of the North Harris County Regional Water Authority (the "Authority") will hold a regular meeting, open to the public, on **Monday, May 3, 2021, at 6:00 p.m., at the Authority's Office, 3648 Cypress Creek Pkwy., Suite 110, Houston, Harris County, Texas 77068 and by Zoom** teleconference and/or videoconference; **REGISTRATION IS REQUIRED** and may be done at <https://zoom.us/meeting/register/tJMqf-iupjojGtUN0ZfemGJJWVQOOWgdiGWG> and a telephone number to join via teleconference, a link to join via videoconference, and a password to access the conference will be provided. Registration and information about attending the meeting in-person can be found at [www.nhcrwa.com](http://www.nhcrwa.com); however, seats for in-person attendance are limited. The meeting packet will be posted on the Authority's website at <https://www.nhcrwa.com/meetings>. The subject of this meeting is to consider and act on the following matters:

- A. Call to Order;
- B. Message from the President;
- C. Board Member Comments;
- D. Public Comments (15 minutes);
- E. **REPORTS:**
  - 1. Report on status of activities by communications/public information consultant;
  - 2. General Manager's Report, including:
    - a. report on miscellaneous administrative matters, including correspondence received from constituents of the Authority;
    - b. update on status of Surface Water Conversion Program; and
    - c. update on 2010-2025 Water Distribution and Transmission System;
  - 3. Program Manager's Report;
  - 4. Attorney's Report;
- F. **REGULAR AGENDA:**
  - 1. Approval of minutes of the April 5, 2021 regular meeting;
  - 2. Accept Agreed-Upon Procedures Report prepared by McCall Gibson Swedlund Barfoot, PLLC related to the audit report for the fiscal year ending December 31, 2020;
  - 3. Review and approve audit report for the fiscal year ending December 31, 2020, and authorize filing of same;

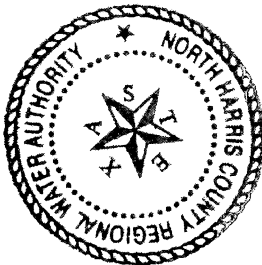


4. Finance Director's Report, including:
  - a. approve payment of bills and issuance of checks, review budget comparison and report on status of payments of quarterly pumpage fees;
  - b. authorize Finance Director to update continuing disclosure information;
- G. General Manager's action items, including:
  1. Approve Utility Construction Services Agreement by and between the Authority and CenterPoint Energy Houston Electric, LLC;
  2. Designate member voting representative for Association of Water Board Directors – Texas;
- H. Confirm next **regular meeting date on Monday, June 7, 2021, at 6:00 p.m.;**
- I. Public Comments (15 minutes); and
- J. Adjourn.

If, during the course of the meeting covered by this Notice, the Board should determine that a closed or executive session of the Board should be held or is required in relation to any agenda item included in this Notice, then such closed or executive meeting or session, as authorized by the Texas Open Meetings Act, will be held by the Board at the date, hour, and place given in this Notice concerning any and all subjects for any and all purposes permitted by Sections 551.071-551.084 of Texas Government Code and the Texas Open Meetings Act, including, but not limited to Section 551.071, for the purpose of a private consultation with the Board's attorney on any and all subjects or matters authorized by law.

EXECUTED this 27<sup>th</sup> day of April, 2021.

NORTH HARRIS COUNTY REGIONAL  
WATER AUTHORITY



By: \_\_\_\_\_

Robin S. Bobbitt/Jonathan D. Polley  
Radcliffe Bobbitt Adams Polley PLLC  
General Counsel for the Authority



**\*As a result of the current COVID-19 virus epidemic emergency, the Board will conduct this meeting by teleconference and/or videoconference pursuant to guidance of the Governor of the State of Texas while also allowing limited in-person attendance by the public. Whether attending in person or by Zoom, members of the public may participate and address the Board during the meeting. In all respects, this meeting will be open to the public and compliant with applicable law and guidance of the Governor of the State of Texas.**





Jun Chang, P.E., D.WRE  
General Manager

**BOARD OF DIRECTORS**  
Alan J. Rendl, President  
Kelly P. Fessler, Vice President  
Lenox A. Sigler, Secretary  
Ron Graham, Asst. Secretary  
James D. Pulliam, Treasurer

## MEMORANDUM

**To:** NHCRWA Board of Directors  
**From:** Jun Chang, P.E.  
**Date:** April 30, 2021  
**Subject:** General Manager's Report  
May 3, 2021 Meeting

---

The General Manager offers comments regarding certain items for the May 3, 2021 Agenda as follows:

### Reports

**E.2.a. Report on miscellaneous administrative matters, including correspondence received from constituents of the Authority.**

#### Nothing to report

**E.2.b. Update on status of Surface Water Conversion Program.**

Philip Topek of AECOM will provide a report regarding the status of the Permit Year 2010-2025 Surface Water Conversion Program.

**E.2.c. Update on 2010-2025 Water Distribution and Transmission System.**

Philip Topek will present to the Board on the progress and status of the design and construction of the system.

**F.3. Review and approve audit report for the fiscal year ending December 31, 2020, and authorize filing of same.**

The Section 9.05 of the Amended and Restated Procedural Rules of the North Harris County Regional Water Authority (the "Authority") as adopted at the February 1, 2021, Board of Directors meeting includes an annual audit requirement.

The Authority has employed McGrath & Co., PLLC Certified Public Accountants to conduct an independent audit of the Authority's financial records for Fiscal Year (FY) 2020 from January 1, 2020 through December 31, 2020. McGrath & Co. has completed



the audit. The draft Independent Auditor's Report is included in your Board packet under Tab 6. Also included under that same tab are the following:

1. May 3, 2021 letter from McGrath & Co. to Authority Board of Directors
2. May 3, 2021 letter from General Manager to McGrath & Co.

Mr. Tim Applewhite will present the Audit to the Board.

I recommend that the Authority Board of Directors approve this Agenda item.

**G.1. Approve Utility Construction Services Agreement by and between the Authority and CenterPoint Energy Houston Electric, LLC.**

Philip Topek will present this Agenda Item and is prepared to answer any questions that Authority Board members might have.

I recommend that the Authority Board of Directors approve this Agenda item.



# **PROGRAM MANAGER'S OVERVIEW OF KEY ACTIVITIES AND UPDATE ON REGIONAL WATER PROJECTS**

**Presented at the May 3, 2021  
North Harris County Regional Water Authority ("Authority") Board Meeting**

## **SURFACE WATER CONVERSION**

- During April Spears Road Regional Pump Station delivered treated surface water to the Authority at an average daily rate of approximately 24.9 MGD (million gallons per day).
- Alternative water i.e. surface water, etc., usage during March was approximately 31.9% compared to approximately 22.5% in February.

## **MAJOR ACTIVITIES**

- Continued oversight of engineering, acquisition and construction related activities.
- Assisted the Authority in a variety of activities involving the City of Houston ("City").
- Assisted the Authority in implementing and performing tasks regarding its aggregate water well permit ("Permit").
- Provided oversight, on behalf of the Authority, of Inframark activities and its contract to operate the Authority's system.
- Monitored, tabulated, and analyzed amounts of water used by PWSs covered by the Authority's aggregate water well permit and where necessary and practical, in consort with Inframark, took appropriate actions to optimize the use of surface water.

## **REGIONAL WATER PROJECTS**

### **Luce Bayou Interbasin Transfer Project ("Luce Bayou Project")**

- Capers Ridge Pump Station – Ongoing testing of SCADA system. Continued pavement installation. Completed Rip Rap bank protection. Continued aboveground piping final paint coatings. Ongoing installation of Cathodic Protection System. Initial pump and motor testing and operation.
- Dual 96-Inch Diameter Pipelines – Completed pipe painting, cleanup, and final electrical connections at Pig Retrieval Facility.
- Canal Segments 1 through 5 – Projects Complete.
- Completed adjustments of water level control gates.



### Expansion of Northeast Water Purification Plant ("NEWPP")

- Construction of Central Plant continues with concrete and structural work at filter modules, and masonry and roof placement at Transfer Pump Station.
- Construction of North Plant continues with ongoing structural work for all structures.
- Ongoing installation of roof and overhead bridge crane at Pump Station.
- Installation of HVAC and electrical work at Administration Building. Completed installation of roof at Maintenance Building.
- Construction of South Plant continues with installation of concrete pad and wall panels at GST. Ongoing shotcrete installation at GST. Continued work on dewatering building.
- Ongoing breaker operational tests in preparation to fully energize Main Switchgear Building.
- The Project Advisor/Technical Consultant (PATC) continues to provide construction oversight services on behalf of the City and Authorities.

### Northeast Transmission Line ("NETL")

- Construction of the 54-inch interconnect (Project S-000900-0127) is complete.
- Construction of the 120-inch section of line (Project S-000900-0174) is complete.
- Construction of two (2) 108-inch sections of line (Project S-000900-0156 and S-000900-0126) are complete.
- Construction of two (2) 108-inch sections of line (Project S-000900-0155 and S-000900-0154) are substantially complete.
- Construction of six (6) other sections of the 108-inch line (S-000900-0167, S-000900-0157, S-000900-0165, S-000900-0168, S-000900-0164 and S-000900-0140) and the 66-inch interconnect (S-000900-0166) is ongoing.
- Real estate acquisition effort continues on two sections of the line.



**North Harris County Regional Water Authority  
Program Manager's Report  
Report Period: March 27, 2021 – April 23, 2021**

**KEY ACTIVITIES DURING REPORTING PERIOD**

1. Miscellaneous program management/administration duties, i.e. responded to e-mails, inquiries, attended meetings, provided information, etc.
2. 3/29/21 – Participated in a virtual meeting on Project 31E to discuss alignment and acquisition questions with representatives of PAS Property Acquisition Services and Husch Blackwell.
3. 3/29/21 – Participated in conference call with Authority representatives and RBAP Attorneys to discuss on-going Authority matters.
4. 3/30/21 – Participated in a virtual meeting on Project 31D and 31E to discuss alignment and acquisition questions with representatives of PAS Property Acquisition Services, Husch Blackwell, and JLL, Inc.
5. 3/30/21 – Facilitated virtual meeting with LJA representatives to discuss outstanding issues with Project 6C-2.
6. 3/31/21 – In person meeting with representative of TWDB to obtain stamped and signed plans for Project 25B.
7. 3/31/21 – Participated and facilitated virtual meeting with representatives from RPS and AECOM to discuss status of Project 28C.
8. 3/31/21 – Participated in a virtual meeting on Project 31F to discuss project coordination along Texas Army Trail with Timberlake Improvement District with representatives of District and FNI.
9. 3/31/21 – Conducted a virtual meeting on Project 31F to discuss parcel index map comments with representatives from FNI.
10. 3/31/21 – Conducted a virtual meeting on Project 31B to discuss Parcel 31B-23 and alignment with representatives from Jones & Carter, Inc. from the land development side and owner with Stream Flow Properties.
11. 4/1/21 – Facilitated virtual meeting with LJA representatives to discuss outstanding issues with Project 6C-2.
12. 4/1/21 -- Conducted virtual progress meeting for Project 7D-1 with Authority's Design Manager and representatives from KIT.
13. 4/1/21 – Participated in virtual meeting for Project 31E to discuss Parcels 31E-9 WLE and 31E-9 TCE and Parcels 31E-1 WLE and 31E-1 TCE alignments with representatives from BBI.
14. 4/1/21 – Attended a weekly status meeting with the Authority's General Manager, Design Manager, Technical Advisor and Construction Advisor.
15. 4/1/21 – Participated in an easement acquisition conference call for Projects 25A, 25C, 25D, 28C, 28D, and 28E with the Authority's General Manager, Design Manager and representatives from Harris County, Hunton Andrews & Kurth, Universal Field Services, PAS Property Acquisition Services and Integra Reality Resources.
16. 4/5/21 - Conducted a design review meeting for Project 24C with the Authority's Technical Advisor and representatives from Williams Pipeline.



17. 4/5/21 - Prepared Program Manager's Report and Presented Program Manager's Report at April 5, 2021 Board of Directors Meeting.
18. 4/5/21 – Participated in a workshop to discuss development of competitive sealed proposal (CSP) documents with representatives from the Authority.
19. 4/6/21 -- Facilitated virtual meeting with LJA representatives to discuss outstanding issues for Project 6C-2.
20. 4/6/21 -- Participated in virtual meeting for Project 31E to discuss Parcels 31E-9 WLE and 31E-9 TCE and Parcels 31E-1 WLE and 31E-1 TCE alignments with representative from PAS.
21. 4/7/21 – Conducted virtual progress meeting for Project 6C-2 with the Authority's Design Manager and representatives from LJA.
22. 4/7/21 - Conducted a virtual meeting for Project 25E with representatives of Kimley-Horn & Associates, Inc. to discuss technical advisor's review comments.
23. 4/7/21 – Participated in a virtual meeting on Project 31A and 31C to discuss alignment connection with representatives of Aurora Technical Services and IDS Engineering Group.
24. 4/7/21 – Conducted a virtual progress meeting on Project 25E to discuss progress on real estate acquisition with representatives of PAS Property Acquisition Services, Husch Blackwell, and JLL, Inc.
25. 4/7/21 - Conducted a virtual progress meeting for Project 31B with Authority's Design Manager and representatives of Jones & Carter, Inc.
26. 4/8/21 – Attended a weekly status meeting with the Authority's General Manager, Design Manager, Technical Advisor and Construction Advisor.
27. 4/8/21 – Participated in an easement acquisition conference call for Projects 25A, 25C, 25D, 28C, 28D, and 28E with the Authority's General Manager, Design Manager and representatives from Harris County, Hunton Andrews & Kurth, Universal Field Services, PAS Property Acquisition Services and Integra Reality Resources.
28. 4/8/21 - Participated in a design coordination meeting for Project 24C with Enchanted Rock and representatives of Dannenbaum and Carollo.
29. 4/8/21 - Conducted a virtual progress meeting for Project 31A with Authority's Design Manager and representatives of Aurora Technical Services, LLC.
30. 4/9/21 – Conducted a design coordination meeting for Project 24C to discuss Williams pipeline outfall crossing with representatives of Dannenbaum.
31. 4/9/21 - Participated in a design coordination meeting for Project 31F with representatives of Comcast and FNI.
32. 4/12/21 – Participated in a Specific Energy design workshop related to Project 2-8 with the Authority's Design Manager, Chief Engineer, Construction Manager, Technical Advisor, and representatives from Inframark and Specific Energy.
33. 4/13/21 – Attended a construction progress meeting for the Northeast Transmission Line Projects S-000900-0140, S-000900-0165 and S-000900-0168.
34. 4/13/21 - Conducted a monthly progress meeting for Project 24-C with Authority's General Manager, Design Manager, Construction Manager, Technical Advisor, and representatives of Dannenbaum, Black & Veatch, and Carollo.
35. 4/13/21 - Participated in a design coordination meeting for Project 31F and Project 31E to discuss tie-in points and parcel needs with representatives of FNI and BBI.
36. 4/13/21 - Participated in a design coordination meeting for Project 31E to with representative of BBI.



37. 4/14/21 – Attended a construction progress meeting for the Northeast Transmission Line Projects S-000900-0157, S-000900-0164 and S-000900-0167.
38. 4/14/21 - Participated in a design coordination meeting for Project 31E with representative of BBI.
39. 4/14/21 – Conducted a virtual progress meeting for Project 28G with the Authority's Design Manager, Construction Manager and representatives from Arcadis and Jones & Carter.
40. 4/14/21 – Conducted a virtual progress meeting for Project 25A with the Authority's Design Manager, Construction Manager and representatives from BBI.
41. 4/15/21 – Participated in a site visit on Project 31C to discuss location of meter station and flow control slabs and other design parameters at Harris County MUD No. 170 water receiving facility with representatives of Inframark, IDS Engineering Group and IDS Engineering Group subconsultants.
42. 4/15/21 – Attended a weekly status meeting with the Authority's General Manager, Design Manager, Technical Advisor and Construction Advisor.
43. 4/15/21 – Participated in an easement acquisition conference call for Projects 25A, 25C, 25D, 28C, 28D, and 28E with the Authority's General Manager, Design Manager and representatives from Harris County, Hunton Andrews & Kurth, Universal Field Services, PAS Property Acquisition Services and Integra Reality Resources.
44. 4/15/21 - Conducted a monthly progress meeting for Project 31F with Authority's Design Manager, Construction Manager, and representatives of FNI.
45. 4/15/21 – Field meeting for Project 25E with representatives of CenterPoint Energy and Kimley-Horn and Associates, Inc. to discuss CNP's facilities for bracing and temporary relocation.
46. 4/16/21 – Field meeting for Project 25E with representatives of Comcast, Kimley-Horn and Associates, Inc., and CivilTech to discuss Comcast facilities for relocation and temporary support.
47. 4/19/21 – Participated in a virtual meeting on Project 7D-1 to discuss proposed alignment and distribution line conflicts with representatives of CenterPoint Energy and KIT.
48. 4/19/21 – Participated in Board Meeting Agenda conference call with Authority staff and attorney.
49. 4/20/21 – Participated in site visits on Project 31C to discuss location of meter station and flow control slabs and other design parameters at Fresh Water Supply District No. 61 water receiving facilities with representatives of Inframark, IDS Engineering Group and IDS Engineering Group subconsultants.
50. 4/21/21 - Conducted a monthly progress meeting for Project 31E with Authority's Design Manager, Construction Manager, and representatives of BBI.
51. 4/21/21 - Conducted a meeting for Project 25A, 25E, and 28D with City of Houston City Engineer, Authority's Design Manager, and representatives of Jones & Carter.
52. 4/22/21 – Attended a weekly status meeting with the Authority's General Manager, Design Manager, Technical Advisor and Construction Advisor.
53. 4/22/21 – Participated in an easement acquisition conference call for Projects 25A, 25C, 25D, 28C, 28D, and 28E with the Authority's General Manager, Design Manager and representatives from Harris County, Hunton Andrews & Kurth, Universal Field Services, PAS Property Acquisition Services and Integra Reality Resources.
54. 4/22/21 – Conducted a virtual construction progress meeting for Project 28B with the project contractor (EP Brady), the Authority's Construction Manager, Dannenbaum and the project Inspectors.



55. 4/22/21 – Conducted a monthly progress meeting for Project 31D with Authority’s Design Manager and representatives of Carollo.
56. 4/22/21 – Conducted a monthly progress meeting for Project 31C with Authority’s Design Manager and representatives of IDS Engineering Group.
57. 4/22/21 - Participated in a design coordination meeting for Project 31E to discuss 50% Submittal preliminary comments with representatives of BBI.
58. 4/23/21 - Participated in a design coordination meeting for Project 31F and Project 31E to discuss tie-in points and Parcel 31E-12 water line and temporary easement needs with representatives of FNI and BBI.
59. 4/23/2021 – Conducted a virtual meeting with representatives from BBI to discuss the Kinder Morgan Letter of No Objection for Project 25A.
60. Oversaw Inframark’s activities on behalf of the Authority.
61. Assisted as needed in identifying, assessing, and recommending solutions to system operational issues and performed various other efforts relevant to same.
62. Monitored, tabulated, and analyzed amounts of water used by PWSs covered by the Authority’s Permit and where necessary and practical, in consort with Inframark and the respective PWS operator, took appropriate actions to increase the use of surface water.
63. Assisted the Authority and Inframark as needed in coordinating the delivery of surface water to the PWSs in the 2010 service area.
64. Assisted the Authority in developing and/or evaluating information and documents relative to development of the 2025 water supply system.
65. Assisted the Authority in a variety of activities involving the City.
66. Assisted the Authority as needed in responding to requirements of the TWDB regarding financial assistance under the TWDB SWIFT program.
67. Conducted status updates with the General Manager.
68. Assisted the Authority in the review of plans for Permitted Encroachments in the Authority’s easements.
69. Updated the Authority’s design standards, standard details, and front-end documents, as required.
70. Coordinated and communicated, as necessary, with the Texas Commission on Environmental Quality (“TCEQ”) to facilitate implementation of the 2020-2021 Capital Improvement Plan, the Updated Groundwater Reduction Plan, and the conversion to and use of treated surface water.
71. Assisted the General Manager in efforts regarding installation of Authority water lines in Harris County ROW and Harris County Flood Control District easements/fee areas.
72. Developed scope of work for upcoming projects.
73. Monitored and/or coordinated the work and/or provided review comments, as necessary, on work products of consulting firms providing engineering, surveying, materials testing, or real estate acquisition services for the Authority.
74. Reviewed and forwarded recommendations concerning payment of invoices from the Authority’s consultants and operator.
75. Updated project schedules and budgets, as necessary.



## **KEY ACTIVITIES PLANNED FOR MAY 2021**

1. Attend regular and any called special Authority Board meetings.
2. Participate in agenda preparation teleconference.
3. Attend status meetings with the General Manager.
4. Perform program management tasks and provide support to General Manager and Authority staff, as necessary.
5. Prepare Program Manager's Report for the next Authority Board meeting.
6. Coordinate monitor and/or review as necessary work done by the Authority's engineering, surveying, acquisition, and materials testing consultants.
7. Provide oversight on engineering efforts on Projects 28B through 28F, 25A through 25E, 24C, 28G, 6C-1, 6C-2, 7D-1 and 31.
8. Provide construction administration services and project representative services, as needed, on the On Call System Repair Contract.
9. Oversee Inframark's activities and serve as the primary contact on behalf of the Authority.
10. Continue as needed to help define, refine, and address operational and administrative issues relevant to surface water delivery.
11. Continue to assist the Authority and Inframark in coordinating the delivery of surface water to the PWSs in the 2010 service area.
12. Conduct hydraulic modeling of the system, as needed, to facilitate the use of surface water.
13. Monitor, tabulate and analyze amounts of water used by PWSs covered by the Authority's aggregate well permit and, where necessary and practical, in consort with Inframark and the respective PWS operator, take appropriate actions to optimize the use of surface water.
14. Assist the Authority as needed in developing and/or evaluating information and documents relative to discussions concerning the Luce Bayou Project and development of the 2025 water supply system.
15. Assist the Authority as necessary in activities involving the City, including the NETL and NEWPP Expansion Projects.
16. Assist the Authority in implementing and complying with its Permit.
17. Coordinate efforts with concerned PWSs wishing to enter into or amend their Water Supply Agreements with the Authority.
18. Coordinate and communicate, as necessary, with the TCEQ to facilitate implementation of the 2020-2021 CIP, the Updated Groundwater Reduction Plan and the conversion to and use of surface water.
19. Update Authority front-end documents, standard details, and design standards, as necessary.
20. Assist, as needed, in the refinement and updating of the costs utilized in the Authority's financial model.
21. Provide support, as necessary, to the Authority's financial advisors.
22. Assist the Authority in the review of plans for Permitted Encroachments in the Authority's easements.
23. Assist the Authority as needed in responding to requirements of the TWDB regarding financial assistance under the TWDB SWIFT program.



24. Develop draft scope of work for engineering consultants.
25. Monitor and/or coordinate the work and/or provide review comments, as necessary, on work products of consulting firms providing engineering, surveying, materials testing, or real estate acquisition services for the Authority.
26. Assist the Authority in the ongoing implementation of the Pilot Direct Connection to Westador MUD.
27. Assist the General Manager in negotiating scope and fees for various engineering engagements.
28. Assist the General Manager in efforts regarding installation of Authority water lines in Harris County ROW and Harris County Flood Control District easements.
29. Review and forward recommendations concerning payment of invoices from the Authority's consultants and operator and construction contractor pay estimate.
30. Update individual project schedules and budgets, as necessary.

#### **KEY CURRENT PROGRAM ISSUES TO BE ADDRESSED / RESOLVED**

1. Implementation of the Authority's 2020-2021 CIP.
2. Assist in the ongoing administration and operation of the Authority's system and the distribution of surface water.
3. Assist the Authority in implementing and performing tasks concerning its Permit and communication with the concerned parties.
4. Assist the Authority, as necessary, in a variety of activities involving the City, including the NETL and NEWPP Expansion Projects.



MINUTES OF MEETING OF THE  
NORTH HARRIS COUNTY REGIONAL WATER AUTHORITY

April 5, 2021

The Board of Directors (the "Board") of the North Harris County Regional Water Authority (the "Authority") met in regular session, open to the public, at 6:00 p.m. on Monday, the 5<sup>th</sup> day of April, 2021, at the Authority's office located at 3648 Cypress Creek Parkway, Suite 110, Houston, Texas, a public meeting place within the boundaries of the Authority and via Zoom at <https://zoom.us/meeting/register/tJAsduCrqj8pHdcLXoND46KC7BhYOljC5mWp> and/or telephone conference call at 346-248-7799, passcode 4403924, pursuant to the Texas Governor's suspension of certain Texas Open Meetings Act provisions due to COVID-19; whereupon, the roll was called of the duly constituted officers and members of the Board, to-wit:

|                  |                              |
|------------------|------------------------------|
| Alan J. Rendl    | President                    |
| Kelly P. Fessler | Vice President               |
| Lenox A. Sigler  | Secretary                    |
| Ron Graham       | Assistant Secretary          |
| Jim Pulliam      | Treasurer/Investment Officer |

All members of the Board were present, thus constituting a quorum, with Director Sigler participating via Zoom. Also attending the meeting were: Mr. Jun Chang, P. E., D.WRE, General Manager for the Authority; Mr. Jimmie Schindewolf, P.E., Senior Advisor to the General Manager for the Authority; Mr. Mark Evans, Director of Planning and Governmental Affairs for the Authority; Mr. Doug Haude, P.E., Construction Manager for the Authority; Ms. Cynthia Plunkett, Finance Director for the Authority; Mr. Travis Jones, Accountant for the Authority; Ms. Barbara Payne of Payne Communications, Communications Coordinator for the Authority; Messrs. Stephen Berckenhoff, P.E., Mike Baugher, P.E., and Philip Topek, of AECOM Technical Services, Inc., Program Manager for the Authority; Mr. David Huang, P.E., and Ms. Katherine Mears, P.E.; of RPS Klotz Associates, on-call engineers for the Authority; Mr. Harrison Steed, P.E., of ARCADIS US, Inc., on-call engineers for the Authority; Ms. Melinda Silva, P.E., of Dannenbaum Engineering Corporation, on-call engineers for the Authority; Mr. Mike Bagstad, P.E., of Zarinkelk Engineering Services, Inc., on-call engineers for the Authority; Mr. Dennis Sander, P.E., of Sander Engineering Corporation, on-call engineers for the Authority; Mr. Rafael Ortega, P.E., of Aurora Technical Services, LLC, on-call engineers for the Authority; Ms. Kate Hallaway, P.E., of Brown & Gay Engineers, Inc., on-call engineers for the Authority; Mr. David Warner, P.E., of Jones|Carter, Inc., on-call engineers for the Authority; Mr. Marcel Khouw, P.E., of IDS Engineering Group, on-call engineers for the Authority; Mr. Carlton McDevitt of Inframark, LLC ("Inframark"), operator for the Authority; Ms. Robin S. Bobbitt, attorney, and Ms. Alison Miller, paralegal, of Radcliffe Bobbitt Adams Polley PLLC ("RBAP"), general counsel and co-bond counsel for the Authority. Numerous members of the public and other consultants to the Authority were also present at the meeting. The conference call meeting was recorded and made available to the public in accordance with the provisions of Texas Government Code Sections 551.125 and 551.127.



WHEREUPON, the meeting was called to order by Director Rendl and evidence was presented that public notice of the meeting had been given in compliance with the law. The posted notices of the meeting are attached hereto.

#### PRESIDENT'S MESSAGE

Director Rendl first noted that tonight there are in person meeting participants in the audience for the first time in over a year. Director Rendl then reported that Mr. Chang will not be attending the meeting in person tonight because he is home recovering from a mild heart attack. Director Rendl added that Mr. Chang is doing well and will be attending the meeting via telephone conference. Director Rendl next stated that he hopes the Authority is able to double or triple the size of the in person audience for next month's Board meeting.

#### BOARD MEMBER COMMENTS

Director Pulliam then stated that he is happy to see everyone at tonight's meeting.

#### PUBLIC COMMENT

Director Rendl noted that no public comment cards had been received.

#### STATUS OF ACTIVITIES BY COMMUNICATIONS/PUBLIC INFORMATION COORDINATOR

A copy of Ms. Payne's PowerPoint presentation is attached as an exhibit to these minutes.

Ms. Payne first reported that billing inserts regarding irrigation practices are available for ordering on the Authority's website. Director Rendl noted that there are many new billing inserts that are available for utility districts to provide to their customers.

Ms. Payne further reported that the Authority's mobile teaching lab has been renovated and will be available for live and video programs in the near future. Ms. Payne stated that the mobile teaching lab will focus on the Authority's ongoing conversion to surface water.

Ms. Payne next reported that the Authority's new Water University North online courses will be a virtual classroom for students of all ages. Ms. Payne stated that an e-blast will be sent out when the courses become available.

#### GENERAL MANAGER'S REPORT

Mr. Chang then informed the Board that Mr. Berckenhoff will be leaving AECOM this month. Mr. Chang stated that Mr. Berckenhoff has made huge contributions to the Authority's Program Management team. Mr. Chang then stated that Mr. Berckenhoff will be replaced by Mr. Philip Topek. Mr. Berckenhoff stated that he has had the privilege of working with the Authority for the last 15 years and that the Authority could not be made up of a finer group of people. Mr. Berckenhoff then stated that the Authority is in great shape and well on the way to meeting the Harris-Galveston Subsidence District's 2025 conversion requirements. Mr. Berckenhoff also stated that he is optimistic for the future of the Authority and that he



appreciates the Authority's Board and staff. Mr. Berckenhoff then introduced Mr. Topek to the Board. Director Rendl thanked Mr. Berckenhoff for his work and contributions to the Authority and welcomed Mr. Topek to the Authority. Mr. Topek stated that it is an honor and a privilege to serve the Authority Board and staff and that he will do his best to fill Mr. Berckenhoff's shoes. Mr. Chang then thanked Mr. Berckenhoff for everything he has done for the Authority.

Mr. Chang next called upon Mr. Berckenhoff to present the Program Manager's Report to the Board, a copy of which is included behind Tab 3 of the meeting packet and attached hereto.

## PROGRAM MANAGER'S REPORT

### UPDATE ON STATUS OF SURFACE WATER CONVERSION

Mr. Berckenhoff first reported that the Spears Road Regional Pump Station delivered a daily average rate of approximately 20.1 million gallons per day ("MGD") of surface water during March. Mr. Berckenhoff added that the alternative water used in February was approximately 22.5%, compared to approximately 32.3% in January. Mr. Berckenhoff further explained that during February, approximately 52.3% of the water used by the Public Water Systems (the "PWSs") in the Authority's 2010 service area was alternative water. Mr. Berckenhoff also reported that the Authority accumulated 530.7 million gallons of over-conversion credits for the Permit Year 2020.

### MAJOR ACTIVITIES

Mr. Berckenhoff went on to report that during the prior month, AECOM had performed other activities for the Authority as follows: 1) implemented and performed tasks regarding the Authority's aggregate water well permit (the "Permit"); 2) assisted the Authority in a variety of activities involving the City of Houston (the "City"); 3) continued oversight of engineering and acquisition related efforts; 4) provided oversight of Inframark's activities and its contract to operate the Authority's system; and 5) monitored, tabulated and analyzed amounts of water used by the PWSs covered by the Authority's Permit and, where necessary and practical, in consort with Inframark and the respective PWS operators, took appropriate actions to optimize the use of surface water. Mr. Berckenhoff also reported that the Authority currently has 26 active projects, with nine (9) in or near construction, 14 in final design and right-of-way acquisition, two (2) undergoing a routing study and one (1) project on hold.

### LUCE BAYOU INTERBASIN TRANSFER PROJECT (THE "LUCE BAYOU PROJECT") UPDATE

Concerning the Luce Bayou Project, Mr. Berckenhoff gave an update on the status of the following items: 1) the contractor completed installation of all permanent pipe supports, completed connection to the electrical substation and energized the switchgear building, electrical building, control building, pump motor control panels and low voltage systems, installed the SCADA computers and monitors, and continued preparation of all aboveground piping for final paint coatings; 2) the contractor completed the concrete pavement and electrical connections at the pig retrieval facility.



## NORTHEAST WATER PURIFICATION PLANT (THE "NEWPP") EXPANSION PROJECT UPDATE

Mr. Berckenhoff further reported on the status of the NEWPP Expansion Project, noting that construction of the Central Plant continues with concrete work and piping at filter modules and masonry and wall placement at the Transfer Pump Station. Mr. Berckenhoff also reported that construction of the North Plant continues with ongoing formwork, rebar placement and structural concrete for various structures. Mr. Berckenhoff added that installation of pump station metal decking and the overhead bridge crane is ongoing. Mr. Berckenhoff further reported that installation of roof blocking and electrical work at the administration building is ongoing and installation of the roof at the maintenance building has been completed. Mr. Berckenhoff next reported that construction of the South Plant is continuing with installation of concrete pad and wall panels at the ground storage tank and continuing work at the dewatering building. Mr. Berckenhoff also reported that installation of the duct bank and feeder cabling is ongoing. Mr. Berckenhoff further noted that the Houston Waterworks Team continues to progress on the procurement of various balance of plant packages and that the Project Advisor/Technical Consultant continues to provide construction oversight services on behalf of the City and the Authorities.

## NORTHEAST TRANSMISSION LINE (THE "NETL") PROJECT UPDATE

Mr. Berckenhoff next reported that in connection with the NETL project, the contractors have continued with construction on six (6) sections of the 108-inch (108") line. Mr. Berckenhoff added that real estate acquisitions are proceeding on several additional sections of the NETL.

## ATTORNEY'S REPORT

Ms. Bobbitt stated that she had nothing to report.

## REGULAR AGENDA

### APPROVAL OF MINUTES

The Board next considered approval of the minutes of the March 1, 2021 regular meeting. Upon motion by Director Fessler, seconded by Director Pulliam, after full discussion and the question being put to the Board, the Board voted unanimously to approve the minutes of the March 1, 2021 regular meeting, as written.

## FINANCE DIRECTOR'S REPORT, INCLUDING APPROVE PAYMENT OF BILLS, ISSUANCE OF CHECKS, REVIEW BUDGET COMPARISON, AND REPORT ON STATUS OF PAYMENTS OF QUARTERLY PUMPAGE FEES

Director Rendl then recognized Ms. Plunkett, who reviewed the Authority's Financial Report with the Board, including the monthly investment report, the checks being presented for payment, and the budget comparison for the month ended February 28, 2021, a copy of which is included behind Tab 5 of the meeting packet and attached hereto.



Upon motion by Director Sigler, seconded by Director Graham, after full discussion and the question being put to the Board, the Board voted unanimously to approve the Financial Report, the monthly investment report, and the checks being presented for payment.

#### GENERAL MANAGER'S ACTION ITEMS

#### ADOPT RESOLUTION ADOPTING POLICY AND PROCEDURES FOR FEBRUARY 2021 FREEZE EVENT FEE ADJUSTMENT CREDITS (THE "RESOLUTION")

Mr. Chang explained that the Resolution is in response to public comments and questions received at the Board's March meeting regarding Winter Storm Uri. Ms. Bobbitt then reviewed the Resolution with the Board, a copy of which is included behind Tab 6 of the meeting packet and attached hereto. Ms. Bobbitt explained that the Authority has coordinated with the other water authorities and the Association of Water Board Directors - Texas to create a uniform policy, which will require a retail water provider to adopt a leak adjustment policy for all classes of customers and provide the Authority with a certificate evidencing the customers who received the fee adjustment credits. Ms. Bobbitt noted that the Resolution only applies to leaks that occurred as a result of Winter Storm Uri and that sufficient documentation must be provided from the customer to the retail water provider that the leak has been repaired. Director Rendl noted that the Resolution will allow for a rebate to any utility district that has adopted a leak adjustment policy to assist their customers due to Winter Storm Uri and will only credit the amount of the Authority's surface water fees. Ms. Bobbitt noted that the Resolution would be posted on the Authority's website.

Upon motion by Director Fessler, seconded by Director Pulliam, after full discussion and the question being put to the Board, the Board voted unanimously to adopt the Resolution.

#### ADOPT RESOLUTION DECLARING THE EXISTENCE OF A PUBLIC NECESSITY FOR THE CONSTRUCTION OF FACILITIES FOR THE TRANSPORTATION, DISTRIBUTION, AND DELIVERY OF WATER, INCLUDING REASONABLE AND NECESSARY APPURTENANCES THERETO, AND AUTHORIZING THE ACQUISITION, BY DONATION, PURCHASE, OR EXERCISE OF THE POWER OF EMINENT DOMAIN, OF PROPERTY AND PROPERTY INTERESTS NECESSARY FOR SUCH FACILITIES, IN CONNECTION WITH PROJECT 24C (THE "RESOLUTION DECLARING EXISTENCE OF PUBLIC NECESSITY")

Mr. Berckenhoff then presented for the Board's approval and adoption the Resolution Declaring Existence of Public Necessity, a copy of which is included behind Tab 7 of the meeting packet and attached hereto. Mr. Berckenhoff then briefly reviewed the Resolution with the Board, explaining that the Resolution pertains to Project 24C as a part of the Authority's 2025 water distribution transmission system.

Upon motion by Director Fessler, seconded by Director Pulliam, after full discussion and the question being put to the Board, the Board voted unanimously to adopt and authorize execution of the Resolution Declaring Existence of Public Necessity.



AWARD OF CONTRACT FOR CONSTRUCTION OF PROJECT 25B AND AUTHORIZE  
EXECUTION OF SAME

Mr. Berckenhoff then recommended award of the contract for construction of Project 25B to the lowest qualified bidder, McKee Utility Contractors, Inc. ("McKee"), in the amount of \$14,538,675.00. Upon motion by Director Fessler, seconded by Director Pulliam, after full discussion and the question being put to the Board, the Board voted unanimously to authorize the award and execution of the contract for construction of Project 24C to McKee, in the amount of \$14,538,675.00.

CONFIRM UPCOMING MEETING DATE

Director Rendl then informed the meeting attendees that the Authority's next regular meeting will be held on Monday, May 3, 2021, at 6:00 p.m. at the Authority's office and via Zoom. Director Rendl noted that additional information on how the Authority meetings will be conducted going forward will be sent out via e-blast and also posted on the Authority's website.

PUBLIC COMMENTS

Mr. Doug Miller of HMW Special Utility District ("HMW") then asked if the Resolution will be made available to the public. Ms. Bobbitt reiterated that the Resolution will be available on the Authority's website.

There being no further business to come before the Board, the meeting was adjourned.

PASSED, APPROVED AND ADOPTED this 3<sup>rd</sup> day of May, 2021.

---

Secretary, Board of Directors

(AUTHORITY SEAL)



**NORTH HARRIS COUNTY REGIONAL WATER AUTHORITY**

**FINANCIAL REPORT**

**For the month of March, 2021**

**May 3, 2021**



**NORTH HARRIS COUNTY REGIONAL WATER AUTHORITY  
ENTERPRISE FUND BALANCE SUMMARY**

**AS OF MARCH 31, 2021**

|  |                            |           |                                |
|--|----------------------------|-----------|--------------------------------|
| <b>CAPITAL FUNDS</b>   |                            | <b>\$</b> | <b>649,604,102.92</b>          |
| CONSTRUCTION   | \$ 94,738,638.70           |           |                                |
| TWDB ESCROW  | <u>\$ 554,865,464.22</u>   |           |                                |
| TOTAL  | \$ 649,604,102.92          |           |                                |
| <b>INTEREST &amp; SINKING FUNDS AND DEBT SERVICE RESERVE FUNDS</b> |                            | <b>\$</b> | <b>162,082,394.24</b>          |
| INTEREST & SINKING   | \$ 40,517,524.37           |           |                                |
| DEBT SERVICE RESERVE   | <u>\$ 121,564,869.87</u>   |           |                                |
| TOTAL  | \$ 162,082,394.24          |           |                                |
| <b>COVERAGE FUND AND IMPROVEMENT FUND</b>                          |                            | <b>\$</b> | <b>284,883,345.21</b>          |
| COVERAGE FUND  | \$ 55,828,486.72           |           |                                |
| IMPROVEMENT FUND   | <u>\$ 229,054,858.49</u>   |           |                                |
| TOTAL  | \$ 284,883,345.21          |           |                                |
| <b>OPERATING FUNDS</b>   |                            | <b>\$</b> | <b>30,390,216.98</b>           |
| OPERATING FUNDS  | <u>\$ 30,390,216.98</u>    |           |                                |
| TOTAL  | \$ 30,390,216.98           |           |                                |
| TOTAL:   | <u>\$ 1,126,960,059.35</u> | <b>\$</b> | <b><u>1,126,960,059.35</u></b> |



# North Harris County Regional Water Authority

## Balance Sheet

**As of 3/31/2021**

|   | Current Year   |
|---|----------------|
| <hr/>                                     |                |
| Assets                                    |                |
| Cash                                      |                |
| Cash in Bank - Amegy Operating acct       | 8,349,016.67   |
| Cash in Bank - Amegy Cap Proj 2003        | 1,929,144.26   |
| Cash in Bank - Amegy Admin. Expense       | 46,604.18      |
| Note Payment Account - Bank of America    | 2,873.82       |
| Petty Cash                                | 1,432.27       |
| Capital Contributions - TexPool           | 11,995,964.76  |
| Operating Fund - Texpool                  | 17,247,996.38  |
| Operations & Maintenance Reserve - TTP    | 4,745,167.48   |
| Construction Fund 2003 - TexSTAR          | 5.64           |
| Interest & Sinking Fund 13 TexPool Prime  | 2,912,624.41   |
| Coverage Fund - TexSTAR                   | 47,058,472.34  |
| Debt Service Reserve Fund 2003 - TPPPrime | 116,746.73     |
| RBC 2003 DSRF Investments                 | 8,392,142.26   |
| Construction Fund 2015 - TexPool          | 3,013.72       |
| Construction Fund 2015 - TexPool Prime    | 568,945.16     |
| Construction Fund 2005 - TexSTAR          | 17,547.71      |
| Interest & Sinking Fund 2014 - TexSTAR    | 2,134,756.44   |
| Debt Service Reserve Fund 2014 - TPPPrime | 115,027.05     |
| CHCRWA Construction Acct. - TPPPrime      | 330,136.85     |
| PFUD Initial Difference 4C3 - TPPPrime    | 246,056.68     |
| Capital Contributions 2008 - TPPPrime     | 1,593,347.86   |
| RBC 2008 Capital Contributions Investmen  | 26,705,839.62  |
| TWDB 2015 Escrow                          | 9,699,660.97   |
| RBC 2014 DSRF Investments                 | 5,921,808.54   |
| Construction Fund 2008 - TexPool Prime    | 1,804,640.12   |
| Construction Fund 2008 - TexSTAR          | 1,569,566.84   |
| Interest & Sinking Fund 2008 - TPPPrime   | 2,879,488.77   |
| Debt Service Reserve Fund 2008 - TPPPrime | 282,527.77     |
| RBC 2016 DSRF Investments                 | 19,336,017.99  |
| Interest & Sinking Fund 2015 - TPPPrime   | 1,429,840.61   |
| Debt Service Reserve Fund 2015 - TPPPrime | 349,714.01     |
| Construction Fund 2016 - TPPPrime         | 457,369.51     |
| Interest & Sinking Fund 2016 - TPPPrime   | 6,195,795.89   |
| Debt Service Reserve Fund 2016 - TPPPrime | 340,867.55     |
| Construction Fund 2016A - TexPool Prime   | 19,733,091.43  |
| Interest & Sinking Fund 2016A - TTPPrime  | 3,451,435.27   |
| Debt Service Reserve Fund 2016A - TPP     | 481,073.45     |
| Construction Fund 2017 - TexPool Prime    | 21,113,193.32  |
| Interest & Sinking Fund 2017 - TTPPrime   | 6,462,114.03   |
| Debt Service Reserve Fund 2017 - TTP      | 915,829.10     |
| TWDB 2017 Escrow                          | 100,637,560.55 |
| TWDB 2016A Escrow                         | 48,821,571.50  |
| Construction Fund 2018 - TexPool Prime    | 6,667,901.40   |
| Interest & Sinking 2018 - TexPool Prime   | 6,093,469.13   |



# North Harris County Regional Water Authority

## Balance Sheet

As of 3/31/2021

|  | Current Year     |
|--|------------------|
| Debt Service Reserve Fund 2018 - TTP     | 1,007,124.04     |
| TWDB 2018 Escrow                         | 120,134,301.45   |
| PTA 2015 TWDB DSRF Investments           | 4,094,208.64     |
| PTA 2016A TWDB DSRF Investments          | 9,757,043.04     |
| PTA 2017 TWDB DSRF Investments           | 20,547,373.43    |
| PTA 2018 TWDB DSRF Investments           | 30,812,815.76    |
| Interest & Sinking 2019 - TexPool Prime  | 5,599,559.24     |
| Debt Service Reserve Fund 2019 - TTP     | 14,338,462.95    |
| TWDB 2019 Escrow                         | 205,260,684.71   |
| Interest & Sinking 2020 - TexPool Prime  | 3,358,440.58     |
| Debt Service Reserve Fund 2020 - TPP     | 4,756,087.56     |
| TWDB 2020 Escrow                         | 70,311,685.04    |
| Improvement Fund - TexSTAR               | 141,898,978.84   |
| RBC Improvement Fund Investments         | 87,155,879.65    |
| RBC Coverage Fund Investments            | 8,770,014.38     |
| Total Cash                               | 1,126,960,059.35 |
| Other Assets                             |                  |
| Due from City of Houston                 | 1,279,550.11     |
| Accounts Receivable - Other              | 5,770,298.79     |
| Accrued Interest Receivable - RBCpurchas | 1,069,882.25     |
| Water Conservation Credits - HGSD        | 725,872.38       |
| Interest in Treated Water Facilities     | 322,765,711.60   |
| Accumulated Amortization - TWF           | (26,732,468.08)  |
| COH NEWPP Funds Held in Escrow           | 241,883,270.00   |
| Interest in Luce Bayou                   | 5,134,827.00     |
| Accumulated Amortization - Luce Bayou    | (548,695.00)     |
| Interest in Water Plant 2 - Charterwood  | 961,432.86       |
| Accumulated Amortization - WP2 Charterw  | (277,745.36)     |
| Interest in Transmission Facilities      | 23,037,069.69    |
| Accumulated Amortization - TF            | (7,167,089.22)   |
| Interest in Northeast Transmission Line  | 236,891,435.63   |
| Accumulated Amortization - NETL          | (3,793,218.00)   |
| Total Other Assets                       | 801,000,134.65   |
| Fixed Assets                             |                  |
| Land, Easements and Right of Ways        | 27,836,427.87    |
| Waterline - Emerald Forest UD            | 36,694.50        |
| Accum. Dep. - Waterline - Emerald Forest | (13,687.65)      |
| ROW Acquisition Costs                    | 10,851,529.98    |
| Infrastructure - Water Wells             | 800,439.00       |
| Infrastructure - Waterlines              | 284,718,031.55   |
| Accum Depr - Infrastructure              | (63,353,271.18)  |
| Construction in Progress                 | 25,365,704.66    |
| Computer Equipment                       | 331,958.01       |
| Accum. Dep. - Computer Equip.            | (277,461.98)     |
| Furniture and Fixtures                   | 37,713.58        |
| Accum. Dep. - Furn. & Fix.               | (27,221.65)      |



# North Harris County Regional Water Authority

## Balance Sheet

As of 3/31/2021

|  | Current Year     |
|--|------------------|
| Leasehold Improvements                   | 6,063.00         |
| Accumulated Amortization - Leasehold Imp | (1,654.00)       |
| Total Fixed Assets                       | 286,311,265.69   |
| Total Assets                             | 2,214,271,459.69 |
| <b>Liabilities</b>                       |                  |
| Deferred Revenue - Capital Contributions |                  |
| Deferred Rev - Cap Cont - Bilma PUD      | 889,956.39       |
| Deferred Rev - Cap Cont - Charterwood    | 691,587.51       |
| Deferred Rev - Cap Cont - CNP UD         | 1,758,212.85     |
| Deferred Rev - Cap Cont - Cy-Champ PUD   | 1,233,975.14     |
| Deferred Rev - Cap Cont - Faulkey Gully  | 1,737,077.25     |
| Deferred Rev - Cap Cont - Fountainhead   | 933,081.34       |
| Deferred Rev - Cap Cont - HCMUD 16       | 775,418.20       |
| Deferred Rev - Cap Cont - HCMUD 25       | 507,768.03       |
| Deferred Rev - Cap Cont - HCMUD109       | 1,377,346.70     |
| Deferred Rev - Cap Cont - HCMUD168       | 1,602,970.06     |
| Deferred Rev - Cap Cont - HCMUD275       | 116,525.82       |
| Deferred Rev - Cap Cont - HCWCID119      | 1,072,049.28     |
| Deferred Rev - Cap Cont - Heatherloch    | 868,766.06       |
| Deferred Rev - Cap Cont - Kleinwood MUD  | 827,585.14       |
| Deferred Rev - Cap Cont - Louetta Road M | 343,079.70       |
| Deferred Rev - Cap Cont - Malcomson Rd M | 1,647,447.44     |
| Deferred Rev - Cap Cont - Meadowhill Reg | 613,109.77       |
| Deferred Rev - Cap Cont - NWHCMUD15      | 438,191.97       |
| Deferred Rev - Cap Cont - NWHCMUD19      | 216,510.35       |
| Deferred Rev - Cap Cont - NWHCMUD20      | 538,761.87       |
| Deferred Rev - Cap Cont - Timberlake ID  | 592,710.48       |
| Deferred Rev - Cap Cont - WHCMUD9        | 914,427.17       |
| Deferred Rev - Cap Cont - WHCMUD10       | 1,238,809.50     |
| Deferred Rev - Cap Cont - WHCMUD11       | 1,286,403.55     |
| Deferred Rev - Cap Cont 05 - HCMUD 44    | 382,035.64       |
| Deferred Rev - Cap Cont 05 - Bilma PUD   | 633,741.27       |
| Deferred Rev - Cap Cont 05 - CNP UD      | 1,217,002.55     |
| Deferred Rev - Cap Cont 05 - Cy-Champ    | 854,047.96       |
| Deferred Rev - Cap Cont 05 - Faulkey Gul | 1,281,718.18     |
| Deferred Rev - Cap Cont 05 - Fountainhea | 651,910.35       |
| Deferred Rev - Cap Cont 05 - HCMUD 16    | 518,025.64       |
| Deferred Rev - Cap Cont 05 - HCMUD275    | 72,302.34        |
| Deferred Rev - Cap Cont 05 - Louetta Nor | 498,001.03       |
| Deferred Rev - Cap Cont 05 - Meadowhill  | 380,455.87       |
| Deferred Rev - Cap Cont 05 - NWHCMUD 15  | 223,312.52       |
| Deferred Rev - Cap Cont 05 - NWHCMUD19   | 163,367.15       |
| Deferred Rev - Cap Cont 05 - NWHCMUD 20  | 446,928.61       |
| Deferred Rev - Cap Cont 05 - NWHCMUD 24  | 168,041.21       |
| Deferred Rev - Cap Cont 05 - NWHCMUD 6   | 252,599.03       |



# North Harris County Regional Water Authority

## Balance Sheet

As of 3/31/2021

|  | Current Year   |
|--|----------------|
| Deferred Rev - Cap Cont 05 - Timberlake        | 418,319.09     |
| Deferred Rev - Cap Cont 05 - WHCMUD 9          | 659,089.46     |
| Deferred Rev - Cap Cont 05 - WHCMUD 10         | 884,283.65     |
| Deferred Rev - Cap Cont 05 - WHCMUD 11         | 819,252.40     |
| Deferred Rev - Cap Cont 08 - Bilma PUD         | 1,972,757.96   |
| Deferred Rev - Cap Cont 08 - CNP UD            | 3,027,081.16   |
| Deferred Rev - Cap Cont 08 - Cy-Champ          | 2,007,538.30   |
| Deferred Rev - Cap Cont 08 - Faulkey Gul       | 2,952,280.86   |
| Deferred Rev - Cap Cont 08 - Fountainhea       | 628,084.34     |
| Deferred Rev - Cap Cont 08 - HCMUD168          | 2,533,808.61   |
| Deferred Rev - Cap Cont 08 - HCMUD 25          | 806,388.69     |
| Deferred Rev - Cap Cont 08 - HCMUD275          | 297,396.15     |
| Deferred Rev - Cap Cont 08 - HCMUD 44          | 891,816.23     |
| Deferred Rev - Cap Cont 08 - HCWCID110         | 2,504,275.95   |
| Deferred Rev - Cap Cont 08 - HCWCID119         | 2,076,796.61   |
| Deferred Rev - Cap Cont 08 - Northgate         | 771,357.95     |
| Deferred Rev - Cap Cont 08 - NWHCMUD19         | 780,003.10     |
| Deferred Rev - Cap Cont 08 - NWHCMUD20         | 853,299.89     |
| Deferred Rev - Cap Cont 08 - NWHCMUD24         | 1,290,755.21   |
| Deferred Rev - Cap Cont 08 - Timberlake        | 801,466.59     |
| Deferred Rev - Cap Cont 08 - WHCMUD 10         | 1,796,244.17   |
| Deferred Rev - Cap Cont 08 - WHCMUD 11         | 1,483,484.85   |
| Deferred Rev - Cap Cont 08 - WHCMUD 21         | 1,096,413.31   |
| Deferred Rev - Cap Cont 08 - WHCMUD 9          | 1,445,177.66   |
| Total Deferred Revenue - Capital Contributions | 62,762,633.11  |
| Accounts Payable                               |                |
| Trade Accounts Payable                         | 6,157,387.77   |
| Social Security - 457 Plan Payable             | (18.90)        |
| Group Insurance Payable                        | (28,312.73)    |
| Medicare Payable                               | (4.36)         |
| SUTA Payable                                   | 2,750.13       |
| Compensated Absences                           | 87,429.33      |
| Chloramination Credit Payable                  | 17,853,946.53  |
| Other Payables                                 | 12,568.77      |
| Total Accounts Payable                         | 24,085,746.54  |
| Bonds Payable                                  |                |
| Accumulated Amortization 2013 Bond Prem        | (4,423,410.00) |
| Accrued Interest Payable 2003 Bonds            | 158,230.00     |
| Net Premium on Bonds 2005                      | 0.45           |
| Accumulated Amortization 2005 Bond Prem        | (3,198,395.77) |
| Accrued Interest Payable - 2005 Bonds          | 88,167.00      |
| Bonds Payable - Series 2014 Refunding          | 58,240,000.00  |
| Deferred Premium on Bonds 2014                 | 12,151,604.90  |
| Deferred Discount - Bonds 2014                 | (424,162.15)   |
| Deferred Difference on Refunding 2014          | 1,946,662.00   |
| Accrued Interest Payable - 2014 Bonds          | 130,549.36     |



# North Harris County Regional Water Authority

## Balance Sheet

As of 3/31/2021

|  | Current Year     |
|--|------------------|
| Bonds Payable - Series 2013 Refunding  | 78,550,000.00    |
| Deferred Premium on Bonds 2013         | 13,106,405.15    |
| Deferred Difference on Refunding 2013  | (3,340,072.24)   |
| Bonds Payable - Series 2015 TWDB       | 72,205,000.00    |
| Bonds Payable - Series 2016 Revenue    | 245,890,000.11   |
| Accrued Interest Payable - 2016 Bonds  | 515,860.00       |
| Deffered Bond Premium - Series 2016    | 48,223,265.00    |
| Deffered Bond Discount - Series 2016   | (1,383,221.00)   |
| Accumulated Amortization 2016 Bonds    | (6,043,876.00)   |
| Bonds Payable - Series 2016A TWDB      | 179,000,000.00   |
| Accrued Interest Payable - 2016A Bonds | 188,967.00       |
| Deffered Difference - Series 2016      | (20,021,553.01)  |
| Bonds Payable - Series 2017 TWDB       | 372,080,000.00   |
| Accrued Interest Payable - Series 2017 | 412,885.00       |
| Bonds Payable - Series 2018 TWDB       | 468,345,000.00   |
| Accrued Interest Payable - Series 2018 | 657,300.00       |
| Bonds Payable - Series 2019 TWDB       | 230,200,000.00   |
| Accrued Interest Payable - Series 2019 | 710,644.00       |
| Bonds Payable - Series 2020 TWDB       | 78,420,840.00    |
| Total Bonds Payable                    | 1,822,386,689.80 |
| Total Liabilities                      | 1,909,235,069.45 |
| Fund Balance                           |                  |
| Unreserved Fund Balance                | 260,629,111.94   |
| Other                                  | 44,407,278.30    |
| Total Fund Balance                     | 305,036,390.24   |
| Liabilities & Fund Balance             | 2,214,271,459.69 |



# North Harris County Regional Water Authority

## Statement of Revenues and Expenditures

From 3/1/2021 Through 3/31/2021

|  | <u>Current Period Actual</u> | <u>Current Year Actual</u> |
|--|------------------------------|----------------------------|
| Receipts                                 |                              |                            |
| Pumpage Fees                             |                              |                            |
| Cost of Water Revenue                    | 10,859,743.16                | 24,122,340.21              |
| Total Pumpage Fees                       | 10,859,743.16                | 24,122,340.21              |
| Interest Earned                          |                              |                            |
| Interest Earned                          | 17,687.89                    | 74,012.03                  |
| Total Interest Earned                    | 17,687.89                    | 74,012.03                  |
| Total Receipts                           | 10,877,431.05                | 24,196,352.24              |
| Disbursements & Expenses                 |                              |                            |
| Engineering Services                     |                              |                            |
| Acquisition Services                     | 82,621.87                    | 336,074.57                 |
| Engineering Services                     | 1,356,077.81                 | 4,149,172.91               |
| Construction Expense                     | 1,377,013.00                 | 2,249,154.28               |
| Total Engineering Services               | 2,815,712.68                 | 6,734,401.76               |
| Legal Services                           |                              |                            |
| Legal - General Counsel Services         | 10,725.55                    | 28,576.78                  |
| Legal - VRA Submission/Director Election | 215.00                       | 4,515.91                   |
| Legal - Contract Negotiations            | 1,632.50                     | 5,910.00                   |
| Legal - Legislation                      | 2,506.25                     | 5,175.00                   |
| Total Legal Services                     | 15,079.30                    | 44,177.69                  |
| Operations & Maintenance                 |                              |                            |
| Operations & Maintenance Services        | 42,436.00                    | 529,482.13                 |
| Total Operations & Maintenance           | 42,436.00                    | 529,482.13                 |
| Water Purchase                           |                              |                            |
| Bulk Water Purchase                      | 797,033.71                   | 2,363,971.23               |
| Total Water Purchase                     | 797,033.71                   | 2,363,971.23               |
| Legislative Services                     |                              |                            |
| Legislative Consultant                   | 10,833.33                    | 43,333.32                  |
| Total Legislative Services               | 10,833.33                    | 43,333.32                  |
| Communications Services                  |                              |                            |
| Communication Consultant                 | 7,100.00                     | 28,400.00                  |
| Printing                                 | 0.00                         | 79,047.92                  |
| Postage                                  | 0.00                         | 36,803.05                  |
| Water Conservation                       | 500.00                       | 1,500.00                   |
| Professional Services - Communications   | 1,368.75                     | 4,416.66                   |
| WBIMS                                    | 4,314.00                     | 12,942.00                  |
| Total Communications Services            | 13,282.75                    | 163,109.63                 |
| Professional Services                    |                              |                            |
| Director Fees                            | 1,050.00                     | 3,900.00                   |
| Salaries, Wages & Benefits               | 123,588.75                   | 355,743.23                 |
| Retirement                               | 12,798.88                    | 37,345.02                  |
| Group Insurance                          | 16,437.38                    | 49,343.52                  |
| Social Security                          | 7,412.33                     | 21,352.07                  |
| Medicare                                 | 1,792.56                     | 5,169.54                   |
| Unemployment Compensation                | 14.34                        | 1,584.00                   |
| Bank Charges                             | 2,000.00                     | 2,000.00                   |
| Travel/Hotel&Meals                       | 2,755.27                     | 7,908.20                   |
| Mileage Reimbursements                   | 46.48                        | 175.91                     |
| Seminars/Training                        | 950.00                       | 1,495.00                   |
| Total Professional Services              | 168,845.99                   | 486,016.49                 |
| Office Expenses                          |                              |                            |
| Office Supplies                          | 1,890.76                     | 5,262.91                   |
| Postage/delivery                         | 808.19                       | 1,461.17                   |
| Telephone/Long Distance                  | 3,596.86                     | 5,670.90                   |
| Utilities                                | 85,636.74                    | 135,429.52                 |
| Equipment Leases                         | 2,423.12                     | 4,595.38                   |
| Office Lease                             | 13,227.63                    | 52,950.52                  |



# North Harris County Regional Water Authority

## Statement of Revenues and Expenditures

From 3/1/2021 Through 3/31/2021

|   | <u>Current Period Actual</u> | <u>Current Year Actual</u> |
|---|------------------------------|----------------------------|
| Security                                  | 410.68                       | 410.68                     |
| Cellular Telephone                        | 788.16                       | 1,542.23                   |
| Memberships/Subscriptions                 | 451.00                       | 2,006.41                   |
| DSL Line/Internet Service                 | 2,587.64                     | 7,762.92                   |
| Computer Software                         | 119.94                       | 14,278.14                  |
| Computer Services                         | 1,137.50                     | 2,131.25                   |
| Computer Maintenance                      | 0.00                         | 8,650.00                   |
| Computer Equipment                        | <u>2,411.16</u>              | <u>2,521.15</u>            |
| Total Office Expenses                     | 115,489.38                   | 244,673.18                 |
| Misc. Expenses                            |                              |                            |
| Election Expenses                         | 0.00                         | 209,771.93                 |
| Permit Fees                               | <u>0.00</u>                  | <u>125.00</u>              |
| Total Misc. Expenses                      | <u>0.00</u>                  | <u>209,896.93</u>          |
| Total Disbursements & Expenses            | <u>3,978,713.14</u>          | <u>10,819,062.36</u>       |
| Excess Revenues Over (Under) Expenditures | <u>6,898,717.91</u>          | <u>13,377,289.88</u>       |



# North Harris County Regional Water Authority

## Statement of Revenues and Expenditures by Period

From 1/1/2021 Through 3/31/2021

|   | 1/1/2021 -<br>1/31/2021 | 2/1/2021 -<br>2/28/2021 | 3/1/2021 -<br>3/31/2021 | Total         |
|---|-------------------------|-------------------------|-------------------------|---------------|
| <b>Receipts</b>                           |                         |                         |                         |               |
| Pumpage Fees                              |                         |                         |                         |               |
| Cost of Water Revenue                     | 6,867,766.93            | 6,394,830.12            | 10,859,743.16           | 24,122,340.21 |
| Total Pumpage Fees                        | 6,867,766.93            | 6,394,830.12            | 10,859,743.16           | 24,122,340.21 |
| Interest Earned                           |                         |                         |                         |               |
| Interest Earned                           | 29,165.16               | 27,158.98               | 17,687.89               | 74,012.03     |
| Total Interest Earned                     | 29,165.16               | 27,158.98               | 17,687.89               | 74,012.03     |
| Total Receipts                            | 6,896,932.09            | 6,421,989.10            | 10,877,431.05           | 24,196,352.24 |
| <b>Disbursements &amp; Expenses</b>       |                         |                         |                         |               |
| Engineering Services                      |                         |                         |                         |               |
| Acquisition Services                      | 140,384.06              | 113,068.64              | 82,621.87               | 336,074.57    |
| Engineering Services                      | 1,533,291.99            | 1,259,803.11            | 1,356,077.81            | 4,149,172.91  |
| Construction Expense                      | 381,482.63              | 490,658.65              | 1,377,013.00            | 2,249,154.28  |
| Total Engineering Services                | 2,055,158.68            | 1,863,530.40            | 2,815,712.68            | 6,734,401.76  |
| Legal Services                            |                         |                         |                         |               |
| Legal - General Counsel Services          | 8,958.90                | 8,892.33                | 10,725.55               | 28,576.78     |
| Legal - VRA Submission/Direct... Election | 243.75                  | 4,057.16                | 215.00                  | 4,515.91      |
| Legal - Contract Negotiations             | 1,556.25                | 2,721.25                | 1,632.50                | 5,910.00      |
| Legal - Legislation                       | 1,787.50                | 881.25                  | 2,506.25                | 5,175.00      |
| Total Legal Services                      | 12,546.40               | 16,551.99               | 15,079.30               | 44,177.69     |
| Operations & Maintenance                  |                         |                         |                         |               |
| Operations & Maintenance Services         | 145,694.15              | 341,351.98              | 42,436.00               | 529,482.13    |
| Total Operations & Maintenance            | 145,694.15              | 341,351.98              | 42,436.00               | 529,482.13    |
| Water Purchase                            |                         |                         |                         |               |
| Bulk Water Purchase                       | 895,817.69              | 671,119.83              | 797,033.71              | 2,363,971.23  |
| Total Water Purchase                      | 895,817.69              | 671,119.83              | 797,033.71              | 2,363,971.23  |
| Legislative Services                      |                         |                         |                         |               |
| Legislative Consultant                    | 21,666.66               | 10,833.33               | 10,833.33               | 43,333.32     |
| Total Legislative Services                | 21,666.66               | 10,833.33               | 10,833.33               | 43,333.32     |
| Communications Services                   |                         |                         |                         |               |
| Communication Consultant                  | 14,200.00               | 7,100.00                | 7,100.00                | 28,400.00     |
| Printing                                  | 74,464.07               | 4,583.85                | 0.00                    | 79,047.92     |
| Postage                                   | 36,803.05               | 0.00                    | 0.00                    | 36,803.05     |
| Water Conservation                        | 500.00                  | 500.00                  | 500.00                  | 1,500.00      |
| Professional Services - Communications    | 1,525.00                | 1,522.91                | 1,368.75                | 4,416.66      |



# North Harris County Regional Water Authority

## Statement of Revenues and Expenditures by Period

From 1/1/2021 Through 3/31/2021

|   | 1/1/2021 -<br>1/31/2021 | 2/1/2021 -<br>2/28/2021 | 3/1/2021 -<br>3/31/2021 | Total         |
|---|-------------------------|-------------------------|-------------------------|---------------|
| WBIMS                                     | 4,314.00                | 4,314.00                | 4,314.00                | 12,942.00     |
| Total Communications Services             | 131,806.12              | 18,020.76               | 13,282.75               | 163,109.63    |
| Professional Services                     |                         |                         |                         |               |
| Director Fees                             | 1,350.00                | 1,500.00                | 1,050.00                | 3,900.00      |
| Salaries, Wages & Benefits                | 109,625.58              | 122,528.90              | 123,588.75              | 355,743.23    |
| Retirement                                | 11,821.45               | 12,724.69               | 12,798.88               | 37,345.02     |
| Group Insurance                           | 16,429.32               | 16,476.82               | 16,437.38               | 49,343.52     |
| Social Security                           | 6,565.22                | 7,374.52                | 7,412.33                | 21,352.07     |
| Medicare                                  | 1,593.85                | 1,783.13                | 1,792.56                | 5,169.54      |
| Unemployment Compensation                 | 1,168.80                | 400.86                  | 14.34                   | 1,584.00      |
| Bank Charges                              | 0.00                    | 0.00                    | 2,000.00                | 2,000.00      |
| Travel/Hotel&Meals                        | 2,275.33                | 2,877.60                | 2,755.27                | 7,908.20      |
| Mileage                                   | 43.95                   | 85.48                   | 46.48                   | 175.91        |
| Reimbursements                            |                         |                         |                         |               |
| Seminars/Training                         | (130.00)                | 675.00                  | 950.00                  | 1,495.00      |
| Total Professional Services               | 150,743.50              | 166,427.00              | 168,845.99              | 486,016.49    |
| Office Expenses                           |                         |                         |                         |               |
| Office Supplies                           | 2,562.67                | 809.48                  | 1,890.76                | 5,262.91      |
| Postage/delivery                          | 294.74                  | 358.24                  | 808.19                  | 1,461.17      |
| Telephone/Long Distance                   | 1,567.52                | 506.52                  | 3,596.86                | 5,670.90      |
| Utilities                                 | 47,778.48               | 2,014.30                | 85,636.74               | 135,429.52    |
| Equipment Leases                          | 1,086.13                | 1,086.13                | 2,423.12                | 4,595.38      |
| Office Lease                              | 26,455.26               | 13,267.63               | 13,227.63               | 52,950.52     |
| Security                                  | 0.00                    | 0.00                    | 410.68                  | 410.68        |
| Cellular Telephone                        | 359.07                  | 395.00                  | 788.16                  | 1,542.23      |
| Memberships/Sub...                        | 466.90                  | 1,088.51                | 451.00                  | 2,006.41      |
| DSL Line/Internet Service                 | 2,587.64                | 2,587.64                | 2,587.64                | 7,762.92      |
| Computer Software                         | 0.00                    | 14,158.20               | 119.94                  | 14,278.14     |
| Computer Services                         | 993.75                  | 0.00                    | 1,137.50                | 2,131.25      |
| Computer Maintenance                      | 8,650.00                | 0.00                    | 0.00                    | 8,650.00      |
| Computer Equipment                        | 109.99                  | 0.00                    | 2,411.16                | 2,521.15      |
| Total Office Expenses                     | 92,912.15               | 36,271.65               | 115,489.38              | 244,673.18    |
| Misc. Expenses                            |                         |                         |                         |               |
| Election Expenses                         | 0.00                    | 209,771.93              | 0.00                    | 209,771.93    |
| Permit Fees                               | 125.00                  | 0.00                    | 0.00                    | 125.00        |
| Total Misc. Expenses                      | 125.00                  | 209,771.93              | 0.00                    | 209,896.93    |
| Total Disbursements & Expenses            | 3,506,470.35            | 3,333,878.87            | 3,978,713.14            | 10,819,062.36 |
| Excess Revenues Over (Under) Expenditures | 3,390,461.74            | 3,088,110.23            | 6,898,717.91            | 13,377,289.88 |



# INVESTMENT REPORT, AUTHORIZATION AND REVIEW

Report for  
NORTH HARRIS COUNTY REGIONAL WATER AUTHORITY

Prepared for the reporting period ("Period") from 3/1/2021 to 3/31/2021

| Investment Pools                               | Rate    | Beginning Value for Period |          |                | Gain (Loss) to Market Value | Deposits or (Withdrawals) | Ending Value for Period |          |                |
|--|---------|----------------------------|----------|----------------|-----------------------------|---------------------------|-------------------------|----------|----------------|
|  |         | Book                       | N.A.V.   | Market         |                             |                           | Book                    | N.A.V.   | Market         |
| OA Texpool - Operating                         | 0.0200% | 14,009,770.77              | 1.000150 | 14,011,872.24  | 830.69                      | 3,238,225.61              | 17,247,996.38           | 1.000170 | 17,250,928.54  |
| OA Texpool Prime - Operating                   | 0.0900% | 4,744,798.46               | 1.000070 | 4,745,130.60   | 47.48                       | 369.02                    | 4,745,167.48            | 1.000080 | 4,745,547.09   |
| CA Texpool - Construction Fund 2005            | 0.0200% | 3,013.72                   | 1.000150 | 3,014.17       | 0.06                        | 0.00                      | 3,013.72                | 1.000170 | 3,014.23       |
| CA Texpool Prime - Const Fund 2015             | 0.0900% | 568,900.93                 | 1.000070 | 568,940.75     | 5.69                        | 44.23                     | 568,945.16              | 1.000080 | 568,990.68     |
| CA Texpool Prime - Capital Contrib 2005        | 0.0900% | 11,995,031.95              | 1.000070 | 11,995,871.60  | 120.02                      | 932.81                    | 11,995,964.76           | 1.000080 | 11,996,924.44  |
| CA Texpool Prime - CHCRWA Const                | 0.0900% | 330,111.16                 | 1.000070 | 330,134.27     | 3.30                        | 25.69                     | 330,136.85              | 1.000080 | 330,163.26     |
| CA Texpool Prime - PFUD Initial Difference 4C3 | 0.0900% | 246,037.56                 | 1.000070 | 246,054.78     | 2.46                        | 19.12                     | 246,056.68              | 1.000080 | 246,076.36     |
| IS Texpool Prime - I & S Fund 2003/2013        | 0.0900% | 2,242,446.81               | 1.000070 | 2,242,603.78   | 76.04                       | 670,177.60                | 2,912,624.41            | 1.000080 | 2,912,857.42   |
| IS Texpool Prime - 2013 Debt Service Reserve   | 0.0900% | 116,737.69                 | 1.000070 | 116,745.86     | 1.17                        | 9.04                      | 116,746.73              | 1.000080 | 116,756.07     |
| IS Texpool Prime - 2014 Debt Service Reserve   | 0.0900% | 115,018.10                 | 1.000070 | 115,026.15     | 1.15                        | 8.95                      | 115,027.05              | 1.000080 | 115,036.25     |
| CA Texpool Prime - Const Fund 2008             | 0.0900% | 1,804,499.78               | 1.000070 | 1,804,626.09   | 18.06                       | 140.34                    | 1,804,640.12            | 1.000080 | 1,804,784.49   |
| CA Texpool Prime - Capital Contrib 2008        | 0.0900% | 1,593,223.97               | 1.000070 | 1,593,335.50   | 15.94                       | 123.89                    | 1,593,347.86            | 1.000080 | 1,593,475.33   |
| IS Texpool Prime - I & S Fund 2008             | 0.0900% | 2,879,264.86               | 1.000070 | 2,879,466.41   | 28.81                       | 223.91                    | 2,879,488.77            | 1.000080 | 2,879,719.13   |
| IS Texpool Prime - 2008 Debt Service Reserve   | 0.0900% | 282,505.81                 | 1.000070 | 282,525.59     | 2.83                        | 21.96                     | 282,527.77              | 1.000080 | 282,550.37     |
| IS Texpool Prime - I & S Fund 2015             | 0.0900% | 1,089,754.27               | 1.000070 | 1,089,830.55   | 38.10                       | 340,086.34                | 1,429,840.61            | 1.000080 | 1,429,955.00   |
| IS Texpool Prime - 2015 Debt Service Reserve   | 0.0900% | 349,686.81                 | 1.000070 | 349,711.29     | 3.50                        | 27.20                     | 349,714.01              | 1.000080 | 349,741.99     |
| CA Texpool Prime - Const Fund 2016             | 0.0900% | 457,333.99                 | 1.000070 | 457,366.00     | 4.58                        | 35.52                     | 457,369.51              | 1.000080 | 457,406.10     |
| IS Texpool Prime - I & S Fund 2016             | 0.0900% | 4,705,422.90               | 1.000070 | 4,705,752.28   | 166.28                      | 1,490,372.99              | 6,195,795.89            | 1.000080 | 6,196,291.55   |
| IS Texpool Prime - 2016 Debt Service Reserve   | 0.0900% | 340,841.06                 | 1.000070 | 340,864.92     | 3.41                        | 26.49                     | 340,867.55              | 1.000080 | 340,894.82     |
| CA Texpool Prime - Const Fund 2016A            | 0.0900% | 22,731,549.65              | 1.000070 | 22,733,140.86  | (12.56)                     | (2,998,458.22)            | 19,733,091.43           | 1.000080 | 19,734,670.08  |
| IS Texpool Prime - I & S Fund 2016A            | 0.0900% | 2,648,225.52               | 1.000070 | 2,648,410.90   | 90.74                       | 803,209.75                | 3,451,435.27            | 1.000080 | 3,451,711.38   |
| IS Texpool Prime - 2016A Debt Service Reserve  | 0.0900% | 481,036.05                 | 1.000070 | 481,069.72     | 4.81                        | 37.40                     | 481,073.45              | 1.000080 | 481,111.94     |
| CA Texpool Prime - Const Fund 2017             | 0.0900% | 21,111,551.53              | 1.000070 | 21,113,029.34  | 211.25                      | 1,641.79                  | 21,113,193.32           | 1.000080 | 21,114,882.38  |
| IS Texpool Prime - I & S Fund 2017             | 0.0900% | 4,861,728.37               | 1.000070 | 4,862,068.69   | 176.65                      | 1,600,385.66              | 6,462,114.03            | 1.000080 | 6,462,631.00   |
| IS Texpool Prime - 2017 Debt Service Reserve   | 0.0900% | 915,757.88                 | 1.000070 | 915,821.98     | 9.16                        | 71.22                     | 915,829.10              | 1.000080 | 915,902.37     |
| CA Texpool Prime - Const Fund 2018             | 0.0900% | 6,667,382.89               | 1.000070 | 6,667,849.61   | 66.72                       | 518.51                    | 6,667,901.40            | 1.000080 | 6,668,434.83   |
| IS Texpool Prime - I & S Fund 2018             | 0.0900% | 4,778,091.31               | 1.000070 | 4,778,425.78   | 153.01                      | 1,315,377.82              | 6,093,469.13            | 1.000080 | 6,093,956.61   |
| IS Texpool Prime - 2018 Debt Service Reserve   | 0.0900% | 1,007,045.73               | 1.000070 | 1,007,116.22   | 10.08                       | 78.31                     | 1,007,124.04            | 1.000080 | 1,007,204.61   |
| CA Texpool Prime - Const Fund 2019             | 0.0900% | 0.00                       | 1.000070 | 0.00           | 0.00                        | 0.00                      | 0.00                    | 1.000080 | 0.00           |
| IS Texpool Prime - I & S Fund 2019             | 0.0900% | 5,518,129.71               | 1.000070 | 5,518,515.98   | 61.70                       | 81,429.53                 | 5,599,559.24            | 1.000080 | 5,600,007.20   |
| IS Texpool Prime - 2019 Debt Service Reserve   | 0.0900% | 14,337,347.96              | 1.000070 | 14,338,351.57  | 143.46                      | 1,114.99                  | 14,338,466.95           | 1.000080 | 14,339,610.03  |
| CA Texpool Prime - Const Fund 2020             | 0.0900% | 0.00                       | 1.000070 | 0.00           | 0.00                        | 0.00                      | 0.00                    | 1.000080 | 0.00           |
| IS Texpool Prime - I & S Fund 2020             | 0.0900% | 3,358,179.44               | 1.000070 | 3,358,414.51   | 33.60                       | 261.14                    | 3,358,440.58            | 1.000080 | 3,358,709.26   |
| IS Texpool Prime - 2020 Debt Service Reserve   | 0.0900% | 4,755,717.71               | 1.000070 | 4,756,050.61   | 47.59                       | 369.85                    | 4,756,087.56            | 1.000080 | 4,756,468.05   |
| CA TexSTAR - Construction Fund 2005            | 0.0216% | 17,553.03                  | 1.000151 | 17,555.68      | 0.05                        | 0.32                      | 17,553.35               | 1.000154 | 17,556.05      |
| IS TexSTAR - I & S Fund 2005/2014              | 0.0216% | 1,671,725.38               | 1.000151 | 1,671,977.81   | 76.32                       | 463,031.06                | 2,134,756.44            | 1.000154 | 2,135,085.19   |
| CA TexSTAR - Construction Fund 2008            | 0.0216% | 1,569,538.12               | 1.000151 | 1,569,775.12   | 4.71                        | 28.72                     | 1,569,566.84            | 1.000154 | 1,569,808.55   |
| IMP TexSTAR - Improvement Fund                 | 0.0216% | 141,896,378.73             | 1.000151 | 141,917,805.08 | 426.09                      | 2,600.11                  | 141,898,978.84          | 1.000154 | 141,920,831.28 |
| COV TexSTAR - Coverage Fund                    | 0.0216% | 47,057,610.03              | 1.000151 | 47,064,715.73  | 141.31                      | 862.31                    | 47,058,472.34           | 1.000154 | 47,065,719.34  |
|  | 0.0319% | 333,258,949.64             |          | 333,298,968.03 | 3,014.27                    | 7,013,430.98              | 340,272,380.62          |          | 340,315,413.27 |

## PTA Accounts

|                                       | Yield  | Beginning Value for Period |                | Changes in Market Value | Deposits or (Withdraw) | Ending Value for Period |                |
|---------------------------------------|--------|----------------------------|----------------|-------------------------|------------------------|-------------------------|----------------|
|                                       |        | Book                       | Market*        |                         |                        | Book                    | Market*        |
| NHCWRA-2016SERIESATWDBDSRF            | 0.142% | 9,891,223.29               | 9,973,896.61   | (2,788.11)              | 0.00                   | 9,896,326.41            | 9,971,108.49   |
| NHCWRA 2018 DSRF                      | 0.162% | 31,269,483.60              | 31,507,596.74  | 1,027.59                | 0.00                   | 31,301,268.16           | 31,508,624.34  |
| NHCWRA - 2017 TWDB DSRF               | 0.136% | 20,837,661.56              | 21,015,234.11  | (6,948.36)              | 0.00                   | 20,848,795.53           | 21,008,285.75  |
| NHCWRA - 2015 TWDB DSRF               | 0.156% | 4,153,707.13               | 4,169,158.05   | (4,591.53)              | 0.00                   | 4,152,924.09            | 4,164,566.52   |
| NHCRWA Improvement Fund               | 0.141% | 88,421,886.53              | 89,285,885.76  | 1,134.87                | 0.00                   | 88,519,974.40           | 89,287,020.63  |
| NHCRWA Coverage Fund                  | 0.134% | 8,902,053.28               | 8,976,829.85   | (970.96)                | 0.00                   | 8,908,739.38            | 8,975,858.89   |
| NHCRWA 2014 DSRF                      | 0.160% | 6,013,451.15               | 6,049,686.19   | (1,554.54)              | 0.00                   | 6,016,434.34            | 6,048,131.65   |
| NHCRWA 2013 DSRF                      | 0.128% | 8,511,403.80               | 8,588,649.90   | 8,989.84                | 0.00                   | 8,528,384.46            | 8,597,639.74   |
| NHCRWA 2008/2016 DSRF                 | 0.130% | 19,613,372.49              | 19,772,429.92  | (285.90)                | 0.00                   | 19,630,133.34           | 19,772,144.03  |
| NHCRWA 2008 Capital Contribution      | 0.044% | 27,039,212.77              | 27,044,684.87  | 9,027.65                | 0.00                   | 27,047,807.26           | 27,053,712.52  |
| *Market values include accrued income | 0.131% | 224,653,455.60             | 226,384,052.00 | 3,040.55                | 0.00                   | 224,850,787.37          | 226,387,092.55 |

Total of all investments

\$ 7,013,430.98 \$ 565,123,167.99 \$ 566,702,505.83

## Review:

This report complies with the Public Funds Investment Act and the Authority's Investment Policy.  
This report and the Authority's Investment Policy are submitted to the Board for its review and to make any changes thereto as determined by the Board to be necessary and prudent for the management of Authority funds.

Investment Training since 5/2018:  
Jim Pulliam 8 hrs.

Cyndi Plunkett 8 hrs.

## Signatures:

Investment Officer

(please sign & date)





Report: NHCWA Holdings Report  
Date: 03/01/2021 - 03/31/2021

NHCWA-2016 SERIES A TWDB DSRF

| Account                   | Identifier | Ultimate Parent Description           | Final Maturity | S&P Rating | Moody's Rating | Amortized Cost<br>Beginning Date | Market Value<br>Beginning Date | Accrued Interest<br>Beginning Date | Amortized Cost<br>Ending Date | Market Value Ending<br>Date | Accrued Interest<br>Ending Date | Market Value +<br>Accrued Ending Date |
|---------------------------|------------|---------------------------------------|----------------|------------|----------------|----------------------------------|--------------------------------|------------------------------------|-------------------------------|-----------------------------|---------------------------------|---------------------------------------|
| NHCWA-2016SERIESATWDBDSRF | 31846V443  | U.S. Bancorp                          | 03/31/2021     | AAAm       | Aaa            | 816,997.04                       | 816,997.04                     | 0.00                               | 825,797.09                    | 825,797.09                  | 0.00                            | 825,797.09                            |
| NHCWA-2016SERIESATWDBDSRF | CCYUSD     | ---                                   | 03/31/2021     | AA+        | Aaa            | 2,251.89                         | 2,251.89                       | 0.00                               | 4.16                          | 4.16                        | 0.00                            | 4.16                                  |
| NHCWA-2016SERIESATWDBDSRF | 9128284P2  | United States                         | 05/15/2021     | AA+        | Aaa            | 750,141.74                       | 753,937.50                     | 5,764.85                           | 750,083.15                    | 752,328.00                  | 7,450.79                        | 759,778.79                            |
| NHCWA-2016SERIESATWDBDSRF | 912828D72  | United States                         | 08/31/2021     | AA+        | Aaa            | 224,443.69                       | 227,170.80                     | 12.23                              | 224,537.93                    | 226,810.58                  | 391.30                          | 227,201.88                            |
| NHCWA-2016SERIESATWDBDSRF | 912828T67  | United States                         | 10/31/2021     | AA+        | Aaa            | 747,814.42                       | 755,918.25                     | 3,133.63                           | 748,093.78                    | 755,214.75                  | 3,936.46                        | 759,151.21                            |
| NHCWA-2016SERIESATWDBDSRF | 3130A0EN6  | Federal Home Loan Banks               | 12/10/2021     | AA+        | Aaa            | 751,344.93                       | 766,284.80                     | 4,851.56                           | 751,198.85                    | 764,431.01                  | 6,648.44                        | 771,079.44                            |
| NHCWA-2016SERIESATWDBDSRF | 3135G0U92  | Federal National Mortgage Association | 01/11/2022     | AA+        | Aaa            | 249,946.70                       | 255,425.10                     | 911.46                             | 249,951.93                    | 254,952.32                  | 1,458.33                        | 256,410.65                            |
| NHCWA-2016SERIESATWDBDSRF | 912828J76  | United States                         | 03/31/2022     | AA+        | Aaa            | 799,547.19                       | 814,249.60                     | 5,846.15                           | 799,582.38                    | 813,249.60                  | 38.25                           | 813,287.85                            |
| NHCWA-2016SERIESATWDBDSRF | 912828M7   | United States                         | 04/15/2022     | AA+        | Aaa            | 780,226.73                       | 793,496.93                     | 6,563.02                           | 779,834.88                    | 792,377.05                  | 8,048.08                        | 800,425.13                            |
| NHCWA-2016SERIESATWDBDSRF | 313379Q69  | Federal Home Loan Banks               | 06/10/2022     | AA+        | Aaa            | 768,075.44                       | 769,006.03                     | 3,585.94                           | 766,872.06                    | 767,831.62                  | 4,914.06                        | 772,745.68                            |
| NHCWA-2016SERIESATWDBDSRF | 3133ELGN8  | Farm Credit System                    | 10/13/2022     | AA+        | Aaa            | 851,971.77                       | 869,439.01                     | 5,213.33                           | 851,869.38                    | 868,897.27                  | 6,346.67                        | 875,243.93                            |
| NHCWA-2016SERIESATWDBDSRF | 3137EAEQ8  | Freddie Mac                           | 04/20/2023     | AA+        | Aaa            | 751,917.52                       | 753,553.53                     | 1,023.44                           | 751,841.35                    | 752,819.14                  | 1,257.81                        | 754,076.95                            |
| NHCWA-2016SERIESATWDBDSRF | 3135G05G4  | Federal National Mortgage Association | 07/10/2023     | AA+        | Aaa            | 799,061.81                       | 800,646.65                     | 283.33                             | 799,095.72                    | 800,575.24                  | 450.00                          | 801,025.24                            |
| NHCWA-2016SERIESATWDBDSRF | 3137EAEY1  | Freddie Mac                           | 10/16/2023     | AA+        | Aaa            | 747,482.42                       | 747,163.52                     | 351.56                             | 747,563.74                    | 747,133.64                  | 429.69                          | 747,563.32                            |
| NHCWA-2016SERIESATWDBDSRF | 3137EAF2   | Freddie Mac                           | 12/04/2023     | AA+        | Aaa            | 850,000.00                       | 848,355.98                     | 513.54                             | 850,000.00                    | 848,687.05                  | 690.63                          | 849,377.67                            |
| NHCWA-2016SERIESATWDBDSRF | ---        | ---                                   | 07/12/2022     | AA+        | Aaa            | 9,891,223.29                     | 9,973,896.61                   | 38,054.04                          | 9,896,326.41                  | 9,971,108.49                | 42,060.52                       | 10,013,169.01                         |

NHCWA 2018 DSRF

| Account         | Identifier | Ultimate Parent Description           | Final Maturity | S&P Rating | Moody's Rating | Amortized Cost<br>Beginning Date | Market Value<br>Beginning Date | Accrued Interest<br>Beginning Date | Amortized Cost<br>Ending Date | Market Value Ending<br>Date | Accrued Interest<br>Ending Date | Market Value +<br>Accrued Ending Date |
|-----------------|------------|---------------------------------------|----------------|------------|----------------|----------------------------------|--------------------------------|------------------------------------|-------------------------------|-----------------------------|---------------------------------|---------------------------------------|
| NHCWA 2018 DSRF | 31846V443  | U.S. Bancorp                          | 03/31/2021     | AAAm       | Aaa            | 2,063,166.57                     | 2,063,166.57                   | 0.00                               | 2,109,493.80                  | 2,109,493.80                | 0.00                            | 2,109,493.80                          |
| NHCWA 2018 DSRF | CCYUSD     | ---                                   | 03/31/2021     | AA+        | Aaa            | 12,504.49                        | 12,504.49                      | 0.00                               | 10.58                         | 10.58                       | 0.00                            | 10.58                                 |
| NHCWA 2018 DSRF | 9128284P2  | United States                         | 05/15/2021     | AA+        | Aaa            | 2,000,377.97                     | 2,010,500.00                   | 15,372.93                          | 2,000,221.74                  | 2,006,208.00                | 19,868.78                       | 2,026,076.78                          |
| NHCWA 2018 DSRF | 912828D72  | United States                         | 08/31/2021     | AA+        | Aaa            | 1,246,909.40                     | 1,262,060.00                   | 67.93                              | 1,247,432.94                  | 1,260,058.75                | 2,173.91                        | 1,262,232.66                          |
| NHCWA 2018 DSRF | 3133ELEF7  | Farm Credit System                    | 09/20/2021     | AA+        | Aaa            | 1,999,452.50                     | 2,017,630.22                   | 14,758.33                          | 1,999,536.46                  | 2,014,904.00                | 1,008.33                        | 2,015,912.33                          |
| NHCWA 2018 DSRF | 912828F96  | United States                         | 10/31/2021     | AA+        | Aaa            | 2,004,560.99                     | 2,025,782.00                   | 13,370.17                          | 2,003,977.93                  | 2,022,578.00                | 16,795.58                       | 2,039,373.58                          |
| NHCWA 2018 DSRF | 3130A0EN6  | Federal Home Loan Banks               | 12/10/2021     | AA+        | Aaa            | 2,003,586.48                     | 2,043,426.12                   | 12,937.50                          | 2,003,196.92                  | 2,038,482.68                | 17,729.17                       | 2,056,211.85                          |
| NHCWA 2018 DSRF | 3135G0U92  | Federal National Mortgage Association | 01/11/2022     | AA+        | Aaa            | 669,857.14                       | 684,539.26                     | 2,442.71                           | 669,871.18                    | 683,272.21                  | 3,908.33                        | 687,180.54                            |
| NHCWA 2018 DSRF | 912828W89  | United States                         | 03/31/2022     | AA+        | Aaa            | 2,004,638.69                     | 2,038,594.00                   | 15,659.34                          | 2,004,277.84                  | 2,035,390.00                | 102.46                          | 2,035,492.46                          |
| NHCWA 2018 DSRF | 912828M7   | United States                         | 04/15/2022     | AA+        | Aaa            | 2,013,488.34                     | 2,047,734.00                   | 16,936.81                          | 2,012,477.10                  | 2,044,844.00                | 20,769.23                       | 2,065,613.23                          |
| NHCWA 2018 DSRF | 3133ELGN8  | Farm Credit System                    | 10/13/2022     | AA+        | Aaa            | 2,505,799.33                     | 2,557,173.55                   | 15,333.33                          | 2,505,498.18                  | 2,555,580.20                | 18,666.67                       | 2,574,246.87                          |
| NHCWA 2018 DSRF | 3137EAEQ8  | Freddie Mac                           | 04/20/2023     | AA+        | Aaa            | 1,854,729.89                     | 1,858,765.37                   | 2,524.48                           | 1,854,541.99                  | 1,856,953.87                | 3,102.60                        | 1,860,056.48                          |
| NHCWA 2018 DSRF | 3135G05G4  | Federal National Mortgage Association | 07/10/2023     | AA+        | Aaa            | 2,497,068.17                     | 2,502,020.78                   | 885.42                             | 2,497,174.13                  | 2,501,797.63                | 1,406.25                        | 2,503,203.88                          |
| NHCWA 2018 DSRF | 3137EAEV7  | Freddie Mac                           | 08/24/2023     | AA+        | Aaa            | 2,000,305.47                     | 2,001,538.14                   | 97.22                              | 2,000,294.98                  | 2,000,592.04                | 513.89                          | 2,001,105.93                          |
| NHCWA 2018 DSRF | 3137EAEY1  | Freddie Mac                           | 10/16/2023     | AA+        | Aaa            | 1,993,286.45                     | 1,992,436.04                   | 937.50                             | 1,993,503.32                  | 1,992,356.36                | 1,145.83                        | 1,993,502.19                          |
| NHCWA 2018 DSRF | 3137EAF2   | Freddie Mac                           | 12/04/2023     | AA+        | Aaa            | 2,250,000.00                     | 2,245,648.19                   | 1,359.38                           | 2,250,000.00                  | 2,246,524.54                | 1,828.13                        | 2,248,352.66                          |
| NHCWA 2018 DSRF | 3133EMNG3  | Farm Credit System                    | 01/19/2024     | AA+        | Aaa            | 2,149,751.71                     | 2,144,078.02                   | 576.92                             | 2,149,759.06                  | 2,139,577.68                | 989.00                          | 2,140,566.68                          |
| NHCWA 2018 DSRF | ---        | ---                                   | 08/26/2022     | AA+        | Aaa            | 31,269,483.60                    | 31,507,596.74                  | 113,259.97                         | 31,301,268.16                 | 31,508,624.34               | 110,008.17                      | 31,618,632.51                         |

NHCWA - 2017 TWDB DSRF

| Account                | Identifier | Ultimate Parent Description           | Final Maturity | S&P Rating | Moody's Rating | Beginning Date | Beginning Date | Beginning Date | Ending Date   | Date          | Ending Date | Accrued Ending Date |
|------------------------|------------|---------------------------------------|----------------|------------|----------------|----------------|----------------|----------------|---------------|---------------|-------------|---------------------|
| NHCWA - 2017 TWDB DSRF | 31846V443  | U.S. Bancorp                          | 03/31/2021     | AAAm       | Aaa            | 1,677,979.32   | 1,677,979.32   | 0.00           | 1,705,968.99  | 1,705,968.99  | 0.00        | 1,705,968.99        |
| NHCWA - 2017 TWDB DSRF | CCYUSD     | ---                                   | 03/31/2021     | AA+        | Aaa            | 14,503.98      | 14,503.98      | 0.00           | 8.60          | 8.60          | 0.00        | 8.60                |
| NHCWA - 2017 TWDB DSRF | 9128284P2  | United States                         | 05/15/2021     | AA+        | Aaa            | 1,500,283.48   | 1,507,875.00   | 11,529.70      | 1,500,166.31  | 1,504,656.00  | 14,901.59   | 1,519,557.59        |
| NHCWA - 2017 TWDB DSRF | 912828D72  | United States                         | 08/31/2021     | AA+        | Aaa            | 1,446,414.90   | 1,463,989.60   | 78.80          | 1,447,022.21  | 1,461,668.15  | 2,521.74    | 1,464,189.89        |
| NHCWA - 2017 TWDB DSRF | 912828T67  | United States                         | 10/31/2021     | AA+        | Aaa            | 1,695,046.03   | 1,713,414.70   | 7,102.90       | 1,695,679.23  | 1,711,820.10  | 8,922.65    | 1,720,742.75        |
| NHCWA - 2017 TWDB DSRF | 3130A0EN6  | Federal Home Loan Banks               | 12/10/2021     | AA+        | Aaa            | 1,502,689.86   | 1,532,569.59   | 9,703.13       | 1,502,397.69  | 1,528,862.01  | 13,296.88   | 1,542,158.89        |
| NHCWA - 2017 TWDB DSRF | 3135G0U92  | Federal National Mortgage Association | 01/11/2022     | AA+        | Aaa            | 504,892.32     | 515,958.70     | 1,841.15       | 504,902.91    | 515,003.68    | 2,945.83    | 517,949.51          |
| NHCWA - 2017 TWDB DSRF | 912828J76  | United States                         | 03/31/2022     | AA+        | Aaa            | 1,649,066.08   | 1,679,389.80   | 12,057.69      | 1,649,138.66  | 1,677,327.30  | 78.89       | 1,677,406.19        |
| NHCWA - 2017 TWDB DSRF | 912828M7   | United States                         | 04/15/2022     | AA+        | Aaa            | 1,510,116.26   | 1,535,800.50   | 12,702.61      | 1,509,357.83  | 1,533,633.00  | 15,576.92   | 1,549,209.92        |
| NHCWA - 2017 TWDB DSRF | 313379Q69  | Federal Home Loan Banks               | 06/10/2022     | AA+        | Aaa            | 1,536,150.87   | 1,538,012.06   | 7,171.88       | 1,533,744.13  | 1,535,663.24  | 9,828.13    | 1,545,491.36        |
| NHCWA - 2017 TWDB DSRF | 3133ELGN8  | Farm Credit System                    | 10/13/2022     | AA+        | Aaa            | 1,578,653.58   | 1,611,019.34   | 9,660.00       | 1,578,463.85  | 1,610,015.53  | 11,760.00   | 1,621,775.53        |
| NHCWA - 2017 TWDB DSRF | 3137EAEQ8  | Freddie Mac                           | 04/20/2023     | AA+        | Aaa            | 1,503,835.05   | 1,507,107.06   | 2,046.88       | 1,503,682.69  | 1,505,638.28  | 2,515.63    | 1,508,153.90        |
| NHCWA - 2017 TWDB DSRF | 3135G05G4  | Federal National Mortgage Association | 07/10/2023     | AA+        | Aaa            | 1,648,064.99   | 1,651,333.71   | 584.38         | 1,648,134.93  | 1,651,186.43  | 928.13      | 1,652,114.56        |
| NHCWA - 2017 TWDB DSRF | 3137EAEY1  | Freddie Mac                           | 10/16/2023     | AA+        | Aaa            | 1,494,964.84   | 1,494,327.03   | 703.13         | 1,495,127.49  | 1,494,267.27  | 859.38      | 1,495,126.65        |
| NHCWA - 2017 TWDB DSRF | 3137EAF2   | Freddie Mac                           | 12/04/2023     | AA+        | Aaa            | 1,575,000.00   | 1,571,953.73   | 951.56         | 1,575,000.00  | 1,572,567.18  | 1,279.69    | 1,573,846.86        |
| NHCWA - 2017 TWDB DSRF | ---        | ---                                   | 06/20/2022     | AA+        | Aaa            | 20,837,661.56  | 21,015,234.11  | 76,133.79      | 20,848,795.53 | 21,008,285.75 | 85,415.44   | 21,093,701.19       |



NHCWRA - 2015 TWDB DSRF

| Account                 | Identifier | Ultimate Parent Description           | Final Maturity | S&P Rating | Moodys Rating | Amortized Cost<br>Beginning Date | Market Value<br>Beginning Date | Accrued Interest<br>Beginning Date | Amotized Cost<br>Ending Date | Market Value Ending<br>Date | Accrued Interest<br>Ending Date | Market Value +<br>Accrued Ending Date |
|-------------------------|------------|---------------------------------------|----------------|------------|---------------|----------------------------------|--------------------------------|------------------------------------|------------------------------|-----------------------------|---------------------------------|---------------------------------------|
| NHCWRA - 2015 TWDB DSRF | 31846V443  | U.S. Bancorp                          | 03/31/2021     | AAAm       | Aaa           | 542,951.06                       | 542,951.06                     | 0.00                               | 542,763.72                   | 542,763.72                  | 0.00                            | 542,763.72                            |
| NHCWRA - 2015 TWDB DSRF | CCYUSD     | ---                                   | 03/31/2021     | AA+        | Aaa           | 1.25                             | 1.25                           | 0.00                               | 2.76                         | 2.76                        | 0.00                            | 2.76                                  |
| NHCWRA - 2015 TWDB DSRF | 9128286V7  | United States                         | 05/31/2021     | AA+        | Aaa           | 525,507.29                       | 527,669.63                     | 2,789.06                           | 525,334.48                   | 526,777.65                  | 3,739.18                        | 530,516.83                            |
| NHCWRA - 2015 TWDB DSRF | 912828T67  | United States                         | 10/31/2021     | AA+        | Aaa           | 498,542.95                       | 503,945.50                     | 2,089.09                           | 498,729.19                   | 503,476.50                  | 2,624.31                        | 506,100.81                            |
| NHCWRA - 2015 TWDB DSRF | 912828Z60  | United States                         | 01/31/2022     | AA+        | Aaa           | 549,799.72                       | 556,509.80                     | 605.84                             | 549,818.29                   | 555,908.10                  | 1,253.45                        | 557,161.55                            |
| NHCWRA - 2015 TWDB DSRF | 3135G0T78  | Federal National Mortgage Association | 10/05/2022     | AA+        | Aaa           | 411,337.91                       | 411,851.01                     | 3,244.44                           | 410,734.21                   | 411,150.25                  | 3,911.11                        | 415,061.36                            |
| NHCWRA - 2015 TWDB DSRF | 3137EAEQ8  | Freddie Mac                           | 04/20/2023     | AA+        | Aaa           | 501,278.35                       | 502,369.02                     | 682.29                             | 501,227.56                   | 501,879.43                  | 838.54                          | 502,717.97                            |
| NHCWRA - 2015 TWDB DSRF | 3135G05G4  | Federal National Mortgage Association | 07/10/2023     | AA+        | Aaa           | 549,355.00                       | 550,444.57                     | 194.79                             | 549,378.31                   | 550,395.48                  | 309.38                          | 550,704.85                            |
| NHCWRA - 2015 TWDB DSRF | 3133EMNG3  | Farm Credit System                    | 01/19/2024     | AA+        | Aaa           | 574,933.60                       | 573,416.21                     | 154.29                             | 574,935.56                   | 572,212.64                  | 264.50                          | 572,477.14                            |
| NHCWRA - 2015 TWDB DSRF | ---        | ---                                   | 07/14/2022     | AA+        | Aaa           | 4,153,707.13                     | 4,169,158.05                   | 9,759.81                           | 4,152,924.09                 | 4,164,566.52                | 12,940.47                       | 4,177,506.99                          |

NHCRWA Improvement Fund

| Account                 | Identifier | Ultimate Parent Description           | Final Maturity | S&P Rating | Moodys Rating | Amortized Cost<br>Beginning Date | Market Value<br>Beginning Date | Accrued Interest<br>Beginning Date | Amotized Cost<br>Ending Date | Market Value Ending<br>Date | Accrued Interest<br>Ending Date | Market Value +<br>Accrued Ending Date |
|-------------------------|------------|---------------------------------------|----------------|------------|---------------|----------------------------------|--------------------------------|------------------------------------|------------------------------|-----------------------------|---------------------------------|---------------------------------------|
| NHCRWA Improvement Fund | 9128284B3  | United States                         | 03/15/2021     | AA+        | Aaa           | 3,399,676.28                     | 3,403,029.40                   | 37,252.07                          | 0.00                         | 0.00                        | 0.00                            | 0.00                                  |
| NHCRWA Improvement Fund | 31846V443  | U.S. Bancorp                          | 03/31/2021     | AAAm       | Aaa           | 3,213,725.42                     | 3,213,725.42                   | 0.00                               | 6,734,595.03                 | 6,734,595.03                | 0.00                            | 6,734,595.03                          |
| NHCRWA Improvement Fund | CCYUSD     | ---                                   | 03/31/2021     | AA+        | Aaa           | 18,288.41                        | 18,288.41                      | 0.00                               | 26.25                        | 26.25                       | 0.00                            | 26.25                                 |
| NHCRWA Improvement Fund | 3133EJLZ0  | Farm Credit System                    | 04/23/2021     | AA+        | Aaa           | 3,424,590.37                     | 3,437,750.08                   | 31,966.67                          | 3,424,829.96                 | 3,430,481.54                | 39,458.85                       | 3,469,940.40                          |
| NHCRWA Improvement Fund | 9128284T4  | United States                         | 06/15/2021     | AA+        | Aaa           | 2,996,937.12                     | 3,022,266.00                   | 16,442.31                          | 2,997,832.87                 | 3,015,789.00                | 23,149.04                       | 3,038,938.04                          |
| NHCRWA Improvement Fund | 912828RC6  | United States                         | 08/15/2021     | AA+        | Aaa           | 1,796,593.41                     | 1,817,296.20                   | 1,479.28                           | 1,797,225.77                 | 1,813,921.20                | 4,754.83                        | 1,818,676.03                          |
| NHCRWA Improvement Fund | 313378JP7  | Federal Home Loan Banks               | 09/10/2021     | AA+        | Aaa           | 2,007,775.77                     | 2,024,874.06                   | 22,562.50                          | 2,006,524.26                 | 2,020,329.86                | 2,770.83                        | 2,023,100.69                          |
| NHCRWA Improvement Fund | 912828T67  | United States                         | 10/31/2021     | AA+        | Aaa           | 2,991,257.69                     | 3,023,673.00                   | 12,534.53                          | 2,992,375.12                 | 3,020,859.00                | 15,745.86                       | 3,036,604.86                          |
| NHCRWA Improvement Fund | 912828T67  | United States                         | 10/31/2021     | AA+        | Aaa           | 498,542.95                       | 503,945.50                     | 2,089.09                           | 498,729.19                   | 503,476.50                  | 2,624.31                        | 506,100.81                            |
| NHCRWA Improvement Fund | 3133EJT74  | Farm Credit System                    | 11/15/2021     | AA+        | Aaa           | 3,002,280.25                     | 3,062,668.05                   | 26,941.67                          | 3,002,006.96                 | 3,055,234.14                | 34,566.67                       | 3,089,800.81                          |
| NHCRWA Improvement Fund | 912828U65  | United States                         | 11/30/2021     | AA+        | Aaa           | 2,251,501.09                     | 2,278,300.50                   | 9,843.75                           | 2,251,331.58                 | 2,275,312.50                | 13,197.12                       | 2,288,509.62                          |
| NHCRWA Improvement Fund | 3130A0EN6  | Federal Home Loan Banks               | 12/10/2021     | AA+        | Aaa           | 2,955,312.75                     | 3,014,053.53                   | 19,082.81                          | 2,954,735.68                 | 3,006,761.95                | 26,150.52                       | 3,032,912.47                          |
| NHCRWA Improvement Fund | 9128285V8  | United States                         | 01/15/2022     | AA+        | Aaa           | 2,998,260.47                     | 3,062,931.00                   | 9,323.20                           | 2,998,429.35                 | 3,057,306.00                | 15,745.86                       | 3,073,051.86                          |
| NHCRWA Improvement Fund | 3133ELKN3  | Farm Credit System                    | 01/28/2022     | AA+        | Aaa           | 2,600,310.60                     | 2,634,420.13                   | 3,694.17                           | 2,600,281.54                 | 2,630,592.33                | 7,052.50                        | 2,637,644.83                          |
| NHCRWA Improvement Fund | 313378WG2  | Federal Home Loan Banks               | 03/11/2022     | AA+        | Aaa           | 2,204,535.28                     | 2,253,835.30                   | 25,972.22                          | 2,204,164.85                 | 2,249,771.48                | 3,055.56                        | 2,252,827.04                          |
| NHCRWA Improvement Fund | 3135G0T45  | Federal National Mortgage Association | 04/05/2022     | AA+        | Aaa           | 2,251,580.70                     | 2,292,819.98                   | 17,109.38                          | 2,251,459.40                 | 2,289,771.14                | 20,625.00                       | 2,310,396.14                          |
| NHCRWA Improvement Fund | 912828XR6  | United States                         | 05/31/2022     | AA+        | Aaa           | 2,250,196.91                     | 2,295,614.25                   | 9,843.75                           | 2,250,183.63                 | 2,292,889.50                | 13,197.12                       | 2,306,086.62                          |
| NHCRWA Improvement Fund | 313379Q69  | Federal Home Loan Banks               | 06/10/2022     | AA+        | Aaa           | 2,257,635.13                     | 2,307,018.08                   | 10,757.81                          | 2,257,131.63                 | 2,303,494.85                | 14,742.19                       | 2,318,237.04                          |
| NHCRWA Improvement Fund | 9128287C8  | United States                         | 07/15/2022     | AA+        | Aaa           | 2,003,357.61                     | 2,044,532.00                   | 4,350.83                           | 2,003,150.44                 | 2,042,110.00                | 7,348.07                        | 2,049,458.07                          |
| NHCRWA Improvement Fund | 9128282S8  | United States                         | 08/31/2022     | AA+        | Aaa           | 2,251,183.67                     | 2,299,923.00                   | 99.35                              | 2,251,117.60                 | 2,297,549.25                | 3,179.35                        | 2,300,728.60                          |
| NHCRWA Improvement Fund | 313380GJ0  | Federal Home Loan Banks               | 09/09/2022     | AA+        | Aaa           | 1,512,172.65                     | 1,541,965.92                   | 14,333.33                          | 1,511,502.13                 | 1,539,840.00                | 1,833.33                        | 1,541,673.33                          |
| NHCRWA Improvement Fund | 3133ELGN8  | Farm Credit System                    | 10/13/2022     | AA+        | Aaa           | 2,255,219.40                     | 2,301,456.20                   | 13,800.00                          | 2,254,948.36                 | 2,300,022.18                | 16,800.00                       | 2,316,822.18                          |
| NHCRWA Improvement Fund | 912828YK0  | United States                         | 10/15/2022     | AA+        | Aaa           | 2,491,348.89                     | 2,549,512.50                   | 12,937.84                          | 2,491,796.06                 | 2,547,460.00                | 15,865.38                       | 2,563,325.38                          |
| NHCRWA Improvement Fund | 912828YW4  | United States                         | 12/15/2022     | AA+        | Aaa           | 2,498,172.17                     | 2,565,917.50                   | 8,482.14                           | 2,498,257.87                 | 2,562,987.50                | 11,941.96                       | 2,574,929.46                          |
| NHCRWA Improvement Fund | 3133EL3U6  | Farm Credit System                    | 02/01/2023     | AA+        | Aaa           | 3,497,035.25                     | 3,501,640.35                   | 525.00                             | 3,497,167.07                 | 3,501,733.94                | 1,050.00                        | 3,502,783.94                          |
| NHCRWA Improvement Fund | 3130AJTE3  | Federal Home Loan Banks               | 02/17/2023     | AA+        | Aaa           | 4,600,591.32                     | 4,608,930.92                   | 2,406.25                           | 4,596,219.49                 | 4,600,989.14                | 7,562.50                        | 4,608,551.64                          |
| NHCRWA Improvement Fund | 3137EAEQ8  | Freddie Mac                           | 04/20/2023     | AA+        | Aaa           | 4,010,226.79                     | 4,018,952.16                   | 5,458.33                           | 4,009,820.51                 | 4,015,035.40                | 6,708.33                        | 4,021,743.73                          |
| NHCRWA Improvement Fund | 3137EAES4  | Freddie Mac                           | 06/26/2023     | AA+        | Aaa           | 3,999,252.13                     | 4,000,581.24                   | 1,805.56                           | 3,999,279.49                 | 4,003,155.16                | 2,638.89                        | 4,005,794.05                          |
| NHCRWA Improvement Fund | 3135G05G4  | Federal National Mortgage Association | 07/10/2023     | AA+        | Aaa           | 4,994,136.34                     | 5,004,041.55                   | 1,770.83                           | 4,994,348.27                 | 5,003,595.25                | 2,812.50                        | 5,006,407.75                          |
| NHCRWA Improvement Fund | 3137EAEV7  | Freddie Mac                           | 08/24/2023     | AA+        | Aaa           | 4,500,687.32                     | 4,503,460.82                   | 218.75                             | 4,500,663.70                 | 4,501,332.09                | 1,156.25                        | 4,502,488.34                          |
| NHCRWA Improvement Fund | 3137EAEY1  | Freddie Mac                           | 10/16/2023     | AA+        | Aaa           | 2,989,929.68                     | 2,988,654.06                   | 1,406.25                           | 2,990,254.98                 | 2,988,534.54                | 1,718.75                        | 2,990,253.29                          |
| NHCRWA Improvement Fund | 3133EMNG3  | Farm Credit System                    | 01/19/2024     | AA+        | Aaa           | 3,699,572.71                     | 3,689,808.68                   | 992.83                             | 3,699,585.35                 | 3,682,063.92                | 1,702.00                        | 3,683,765.92                          |
| NHCRWA Improvement Fund | ---        | ---                                   | 07/22/2022     | AA+        | Aaa           | 88,421,886.53                    | 89,285,885.76                  | 325,482.52                         | 88,519,974.40                | 89,287,020.63               | 319,153.56                      | 89,606,174.19                         |



NHCRWA Coverage Fund

| Account              | Identifier | Ultimate Parent Description           | Final Maturity | S&P Rating | Moodys Rating | Amortized Cost<br>Beginning Date | Market Value<br>Beginning Date | Accrued Interest<br>Beginning Date | Amotized Cost<br>Ending Date | Market Value Ending<br>Date | Accrued Interest<br>Ending Date | Market Value +<br>Accrued Ending Date |
|----------------------|------------|---------------------------------------|----------------|------------|---------------|----------------------------------|--------------------------------|------------------------------------|------------------------------|-----------------------------|---------------------------------|---------------------------------------|
| NHCRWA Coverage Fund | 9128284B3  | United States                         | 03/15/2021     | AA+        | Aaa           | 524,950.01                       | 525,467.78                     | 5,752.16                           | 0.00                         | 0.00                        | 0.00                            | 0.00                                  |
| NHCRWA Coverage Fund | 31846V443  | U.S. Bancorp                          | 03/31/2021     | AAAm       | Aaa           | 173,735.41                       | 173,735.41                     | 0.00                               | 707,939.23                   | 707,939.23                  | 0.00                            | 707,939.23                            |
| NHCRWA Coverage Fund | CCYUSD     | ---                                   | 03/31/2021     | AA+        | Aaa           | 2,813.30                         | 2,813.30                       | 0.00                               | 2.38                         | 2.38                        | 0.00                            | 2.38                                  |
| NHCRWA Coverage Fund | 3133EJLZ0  | Farm Credit System                    | 04/23/2021     | AA+        | Aaa           | 549,934.22                       | 552,047.46                     | 5,133.33                           | 549,972.70                   | 550,880.25                  | 6,336.46                        | 557,216.71                            |
| NHCRWA Coverage Fund | 912828WR7  | United States                         | 06/30/2021     | AA+        | Aaa           | 474,470.01                       | 478,265.63                     | 1,673.00                           | 474,605.79                   | 477,425.83                  | 2,537.38                        | 479,963.20                            |
| NHCRWA Coverage Fund | 9128282F6  | United States                         | 08/31/2021     | AA+        | Aaa           | 498,198.91                       | 502,636.50                     | 15.29                              | 498,504.02                   | 502,226.50                  | 489.13                          | 502,715.63                            |
| NHCRWA Coverage Fund | 912828T67  | United States                         | 10/31/2021     | AA+        | Aaa           | 249,271.47                       | 251,972.75                     | 1,044.54                           | 249,364.59                   | 251,738.25                  | 1,312.15                        | 253,050.40                            |
| NHCRWA Coverage Fund | 3137EADB2  | Freddie Mac                           | 01/13/2022     | AA+        | Aaa           | 326,565.50                       | 331,408.34                     | 1,029.17                           | 326,412.23                   | 330,847.88                  | 1,672.40                        | 332,520.27                            |
| NHCRWA Coverage Fund | 3133ELKN3  | Farm Credit System                    | 01/28/2022     | AA+        | Aaa           | 400,047.78                       | 405,295.40                     | 568.33                             | 400,043.31                   | 404,706.51                  | 1,085.00                        | 405,791.51                            |
| NHCRWA Coverage Fund | 9128286M7  | United States                         | 04/15/2022     | AA+        | Aaa           | 377,529.06                       | 383,950.13                     | 3,175.65                           | 377,339.46                   | 383,408.25                  | 3,894.23                        | 387,302.48                            |
| NHCRWA Coverage Fund | 313379Q69  | Federal Home Loan Banks               | 06/10/2022     | AA+        | Aaa           | 275,933.18                       | 281,968.88                     | 1,314.84                           | 275,871.64                   | 281,538.26                  | 1,801.82                        | 283,340.08                            |
| NHCRWA Coverage Fund | 3133EL6R0  | Farm Credit System                    | 09/09/2022     | AA+        | Aaa           | 749,826.54                       | 749,788.78                     | 537.50                             | 749,836.17                   | 749,816.56                  | 68.75                           | 749,885.31                            |
| NHCRWA Coverage Fund | 912828YK0  | United States                         | 10/15/2022     | AA+        | Aaa           | 323,875.35                       | 331,436.63                     | 1,681.92                           | 323,933.49                   | 331,169.80                  | 2,062.50                        | 333,232.30                            |
| NHCRWA Coverage Fund | 912828YK0  | United States                         | 10/15/2022     | AA+        | Aaa           | 324,419.87                       | 331,436.63                     | 1,681.92                           | 324,449.89                   | 331,169.80                  | 2,062.50                        | 333,232.30                            |
| NHCRWA Coverage Fund | 912828YW4  | United States                         | 12/15/2022     | AA+        | Aaa           | 749,451.65                       | 769,775.25                     | 2,544.64                           | 749,477.36                   | 768,896.25                  | 3,582.59                        | 772,478.84                            |
| NHCRWA Coverage Fund | 3137EAEQ8  | Freddie Mac                           | 04/20/2023     | AA+        | Aaa           | 751,917.52                       | 753,553.53                     | 1,023.44                           | 751,841.35                   | 752,819.14                  | 1,257.81                        | 754,076.95                            |
| NHCRWA Coverage Fund | 3137EAES4  | Freddie Mac                           | 06/26/2023     | AA+        | Aaa           | 649,878.47                       | 650,094.45                     | 293.40                             | 649,882.92                   | 650,512.71                  | 428.82                          | 650,941.53                            |
| NHCRWA Coverage Fund | 3135G05G4  | Federal National Mortgage Association | 07/10/2023     | AA+        | Aaa           | 749,120.45                       | 750,606.23                     | 265.63                             | 749,152.24                   | 750,539.29                  | 421.88                          | 750,961.16                            |
| NHCRWA Coverage Fund | 3137EAEV7  | Freddie Mac                           | 08/24/2023     | AA+        | Aaa           | 750,114.55                       | 750,576.80                     | 36.46                              | 750,110.62                   | 750,222.02                  | 192.71                          | 750,414.72                            |
| NHCRWA Coverage Fund | ---        | ---                                   | 07/22/2022     | AA+        | Aaa           | 8,902,053.28                     | 8,976,829.85                   | 27,771.22                          | 8,908,739.38                 | 8,975,858.89                | 29,206.13                       | 9,005,065.02                          |

NHCRWA 2014 DSRF

| Account          | Identifier | Ultimate Parent Description           | Final Maturity | S&P Rating | Moodys Rating | Amortized Cost<br>Beginning Date | Market Value<br>Beginning Date | Accrued Interest<br>Beginning Date | Amotized Cost<br>Ending Date | Market Value Ending<br>Date | Accrued Interest<br>Ending Date | Market Value +<br>Accrued Ending Date |
|------------------|------------|---------------------------------------|----------------|------------|---------------|----------------------------------|--------------------------------|------------------------------------|------------------------------|-----------------------------|---------------------------------|---------------------------------------|
| NHCRWA 2014 DSRF | 9128284B3  | United States                         | 03/15/2021     | AA+        | Aaa           | 324,969.06                       | 325,289.58                     | 3,560.86                           | 0.00                         | 0.00                        | 0.00                            | 0.00                                  |
| NHCRWA 2014 DSRF | 31846V443  | U.S. Bancorp                          | 03/31/2021     | AAAm       | Aaa           | 27,496.51                        | 27,496.51                      | 0.00                               | 359,050.93                   | 359,050.93                  | 0.00                            | 359,050.93                            |
| NHCRWA 2014 DSRF | CCYUSD     | ---                                   | 03/31/2021     | AA+        | Aaa           | 2,968.88                         | 2,968.88                       | 0.00                               | 1.07                         | 1.07                        | 0.00                            | 1.07                                  |
| NHCRWA 2014 DSRF | 3133EJLZ0  | Farm Credit System                    | 04/23/2021     | AA+        | Aaa           | 349,958.14                       | 351,302.93                     | 3,266.67                           | 349,982.62                   | 350,560.16                  | 4,032.29                        | 354,592.45                            |
| NHCRWA 2014 DSRF | 912828WR7  | United States                         | 06/30/2021     | AA+        | Aaa           | 299,665.27                       | 302,062.50                     | 1,056.63                           | 299,751.03                   | 301,532.10                  | 1,602.56                        | 303,134.66                            |
| NHCRWA 2014 DSRF | 9128282F6  | United States                         | 08/31/2021     | AA+        | Aaa           | 274,009.40                       | 276,450.08                     | 8.41                               | 274,177.21                   | 276,224.58                  | 269.02                          | 276,493.60                            |
| NHCRWA 2014 DSRF | 912828Y11  | United States                         | 11/30/2021     | AA+        | Aaa           | 505,142.88                       | 505,351.50                     | 1,875.00                           | 504,559.14                   | 504,804.50                  | 2,513.74                        | 507,318.24                            |
| NHCRWA 2014 DSRF | 3137EADB2  | Freddie Mac                           | 01/13/2022     | AA+        | Aaa           | 226,083.80                       | 229,436.54                     | 712.50                             | 225,977.70                   | 229,048.53                  | 1,157.81                        | 230,206.34                            |
| NHCRWA 2014 DSRF | 3133ELKN3  | Farm Credit System                    | 01/28/2022     | AA+        | Aaa           | 300,035.84                       | 303,971.55                     | 426.25                             | 300,032.49                   | 303,529.88                  | 813.75                          | 304,343.63                            |
| NHCRWA 2014 DSRF | 9128286M7  | United States                         | 04/15/2022     | AA+        | Aaa           | 302,023.25                       | 307,160.10                     | 2,540.52                           | 301,871.57                   | 306,726.60                  | 3,115.38                        | 309,841.98                            |
| NHCRWA 2014 DSRF | 313379Q69  | Federal Home Loan Banks               | 06/10/2022     | AA+        | Aaa           | 200,678.68                       | 205,068.27                     | 956.25                             | 200,633.92                   | 204,755.10                  | 1,310.42                        | 206,065.51                            |
| NHCRWA 2014 DSRF | 9128282S8  | United States                         | 08/31/2022     | AA+        | Aaa           | 175,382.78                       | 178,882.90                     | 7.73                               | 175,361.40                   | 178,698.28                  | 247.28                          | 178,945.56                            |
| NHCRWA 2014 DSRF | 912828YW4  | United States                         | 12/15/2022     | AA+        | Aaa           | 349,744.10                       | 359,228.45                     | 1,187.50                           | 349,756.10                   | 358,818.25                  | 1,671.88                        | 360,490.13                            |
| NHCRWA 2014 DSRF | 3137EAEQ8  | Freddie Mac                           | 04/20/2023     | AA+        | Aaa           | 300,767.01                       | 301,421.41                     | 409.38                             | 300,736.54                   | 301,127.66                  | 503.13                          | 301,630.78                            |
| NHCRWA 2014 DSRF | 3137EAES4  | Freddie Mac                           | 06/26/2023     | AA+        | Aaa           | 549,897.17                       | 550,079.92                     | 248.26                             | 549,900.93                   | 550,433.83                  | 362.85                          | 550,796.68                            |
| NHCRWA 2014 DSRF | 3135G05G4  | Federal National Mortgage Association | 07/10/2023     | AA+        | Aaa           | 349,589.54                       | 350,282.91                     | 123.96                             | 349,604.38                   | 350,251.67                  | 196.88                          | 350,448.54                            |
| NHCRWA 2014 DSRF | 3137EAEV7  | Freddie Mac                           | 08/24/2023     | AA+        | Aaa           | 500,076.37                       | 500,384.54                     | 24.31                              | 500,073.74                   | 500,148.01                  | 128.47                          | 500,276.48                            |
| NHCRWA 2014 DSRF | 3137EAF2   | Freddie Mac                           | 12/04/2023     | AA+        | Aaa           | 650,000.00                       | 648,742.81                     | 392.71                             | 650,000.00                   | 648,995.98                  | 528.13                          | 649,524.10                            |
| NHCRWA 2014 DSRF | 3133EMNG3  | Farm Credit System                    | 01/19/2024     | AA+        | Aaa           | 324,962.47                       | 324,104.82                     | 87.21                              | 324,963.58                   | 323,424.53                  | 149.50                          | 323,574.03                            |
| NHCRWA 2014 DSRF | ---        | ---                                   | 09/19/2022     | AA+        | Aaa           | 6,013,451.15                     | 6,049,686.19                   | 16,884.13                          | 6,016,434.34                 | 6,048,131.65                | 18,603.07                       | 6,066,734.72                          |



NHCRWA 2013 DSRF

| Account          | Identifier | Ultimate Parent Description           | Final Maturity | S&P Rating | Moody's Rating | Amortized Cost<br>Beginning Date | Market Value<br>Beginning Date | Accrued Interest<br>Beginning Date | Amortized Cost<br>Ending Date | Market Value Ending<br>Date | Accrued Interest<br>Ending Date | Market Value +<br>Accrued Ending Date |
|------------------|------------|---------------------------------------|----------------|------------|----------------|----------------------------------|--------------------------------|------------------------------------|-------------------------------|-----------------------------|---------------------------------|---------------------------------------|
| NHCRWA 2013 DSRF | 9128284B3  | United States                         | 03/15/2021     | AA+        | Aaa            | 449,957.15                       | 450,400.95                     | 4,930.42                           | 0.00                          | 0.00                        | 0.00                            | 0.00                                  |
| NHCRWA 2013 DSRF | 31846V443  | U.S. Bancorp                          | 03/31/2021     | AAAm       | Aaa            | 85,098.09                        | 85,098.09                      | 0.00                               | 555,224.94                    | 555,224.94                  | 0.00                            | 555,224.94                            |
| NHCRWA 2013 DSRF | CCYUSD     | ---                                   | 03/31/2021     | AA+        | Aaa            | 2,031.64                         | 2,031.64                       | 0.00                               | 1.71                          | 1.71                        | 0.00                            | 1.71                                  |
| NHCRWA 2013 DSRF | 3133EJLZ0  | Farm Credit System                    | 04/23/2021     | AA+        | Aaa            | 449,946.18                       | 451,675.19                     | 4,200.00                           | 449,977.66                    | 450,720.20                  | 5,184.38                        | 455,904.58                            |
| NHCRWA 2013 DSRF | 912828WR7  | United States                         | 06/30/2021     | AA+        | Aaa            | 524,414.22                       | 528,609.38                     | 1,849.10                           | 524,564.29                    | 527,681.18                  | 2,804.47                        | 530,485.65                            |
| NHCRWA 2013 DSRF | 912828F21  | United States                         | 09/30/2021     | AA+        | Aaa            | 573,514.58                       | 581,940.25                     | 5,102.34                           | 573,729.46                    | 580,952.40                  | 33.38                           | 580,985.78                            |
| NHCRWA 2013 DSRF | 912828T67  | United States                         | 10/31/2021     | AA+        | Aaa            | 249,271.47                       | 251,972.75                     | 1,044.54                           | 249,364.59                    | 251,738.25                  | 1,312.15                        | 253,050.40                            |
| NHCRWA 2013 DSRF | 3137EADB2  | Freddie Mac                           | 01/13/2022     | AA+        | Aaa            | 527,528.88                       | 535,351.93                     | 1,662.50                           | 527,281.29                    | 534,446.57                  | 2,701.56                        | 537,148.13                            |
| NHCRWA 2013 DSRF | 3133ELKN3  | Farm Credit System                    | 01/28/2022     | AA+        | Aaa            | 500,059.73                       | 506,619.26                     | 710.42                             | 500,054.14                    | 505,883.14                  | 1,356.25                        | 507,239.39                            |
| NHCRWA 2013 DSRF | 912828M7   | United States                         | 04/15/2022     | AA+        | Aaa            | 453,034.88                       | 460,740.15                     | 3,810.78                           | 452,807.35                    | 460,089.90                  | 4,673.08                        | 464,762.98                            |
| NHCRWA 2013 DSRF | 313379Q69  | Federal Home Loan Banks               | 06/10/2022     | AA+        | Aaa            | 326,102.85                       | 333,235.95                     | 1,553.91                           | 326,030.12                    | 332,727.03                  | 2,129.43                        | 334,856.46                            |
| NHCRWA 2013 DSRF | 9128282S8  | United States                         | 08/31/2022     | AA+        | Aaa            | 250,546.83                       | 255,547.00                     | 11.04                              | 250,516.29                    | 255,283.25                  | 353.26                          | 255,636.51                            |
| NHCRWA 2013 DSRF | 9128282W9  | United States                         | 09/30/2022     | AA+        | Aaa            | 770,577.30                       | 770,508.00                     | 5,872.25                           | 769,471.47                    | 769,541.25                  | 38.42                           | 769,579.67                            |
| NHCRWA 2013 DSRF | 912828YK0  | United States                         | 10/15/2022     | AA+        | Aaa            | 323,875.35                       | 331,436.63                     | 1,681.92                           | 323,933.49                    | 331,169.80                  | 2,062.50                        | 333,232.30                            |
| NHCRWA 2013 DSRF | 912828YW4  | United States                         | 12/15/2022     | AA+        | Aaa            | 549,597.88                       | 564,501.85                     | 1,866.07                           | 549,616.73                    | 563,857.25                  | 2,627.23                        | 566,484.48                            |
| NHCRWA 2013 DSRF | 3137EAEQ8  | Freddie Mac                           | 04/20/2023     | AA+        | Aaa            | 601,534.02                       | 602,842.82                     | 818.75                             | 601,473.08                    | 602,255.31                  | 1,006.25                        | 603,261.56                            |
| NHCRWA 2013 DSRF | 3137EAES4  | Freddie Mac                           | 06/26/2023     | AA+        | Aaa            | 524,901.84                       | 525,076.29                     | 236.98                             | 524,905.43                    | 525,414.11                  | 346.35                          | 525,760.47                            |
| NHCRWA 2013 DSRF | 3135G05G4  | Federal National Mortgage Association | 07/10/2023     | AA+        | Aaa            | 599,296.36                       | 600,484.99                     | 212.50                             | 599,321.79                    | 600,431.43                  | 337.50                          | 600,768.93                            |
| NHCRWA 2013 DSRF | 3137EAEV7  | Freddie Mac                           | 08/24/2023     | AA+        | Aaa            | 750,114.55                       | 750,576.80                     | 36.46                              | 750,110.62                    | 750,222.02                  | 192.71                          | 750,414.72                            |
| NHCRWA 2013 DSRF | ---        | ---                                   | 07/06/2022     | AA+        | Aaa            | 8,511,403.80                     | 8,588,649.90                   | 35,599.98                          | 8,528,384.46                  | 8,597,639.74                | 27,158.93                       | 8,624,798.67                          |

NHCRWA 2008 DSRF

| Account          | Identifier | Ultimate Parent Description           | Final Maturity | S&P Rating | Moody's Rating | Amortized Cost<br>Beginning Date | Market Value<br>Beginning Date | Accrued Interest<br>Beginning Date | Amortized Cost<br>Ending Date | Market Value Ending<br>Date | Accrued Interest<br>Ending Date | Market Value +<br>Accrued Ending Date |
|------------------|------------|---------------------------------------|----------------|------------|----------------|----------------------------------|--------------------------------|------------------------------------|-------------------------------|-----------------------------|---------------------------------|---------------------------------------|
| NHCRWA 2008 DSRF | 9128284B3  | United States                         | 03/15/2021     | AA+        | Aaa            | 974,907.17                       | 975,868.73                     | 10,682.58                          | 0.00                          | 0.00                        | 0.00                            | 0.00                                  |
| NHCRWA 2008 DSRF | 31846V443  | U.S. Bancorp                          | 03/31/2021     | AAAm       | Aaa            | 739,926.15                       | 739,926.15                     | 0.00                               | 1,742,062.86                  | 1,742,062.86                | 0.00                            | 1,742,062.86                          |
| NHCRWA 2008 DSRF | CCYUSD     | ---                                   | 03/31/2021     | AA+        | Aaa            | 7,079.24                         | 7,079.24                       | 0.00                               | 6.55                          | 6.55                        | 0.00                            | 6.55                                  |
| NHCRWA 2008 DSRF | 3133EJLZ0  | Farm Credit System                    | 04/23/2021     | AA+        | Aaa            | 974,883.39                       | 978,629.58                     | 9,100.00                           | 974,951.60                    | 976,560.44                  | 11,232.81                       | 987,793.25                            |
| NHCRWA 2008 DSRF | 912828WR7  | United States                         | 06/30/2021     | AA+        | Aaa            | 849,051.59                       | 855,843.75                     | 2,993.78                           | 849,294.57                    | 854,340.95                  | 4,540.57                        | 858,881.52                            |
| NHCRWA 2008 DSRF | 9128282F6  | United States                         | 08/31/2021     | AA+        | Aaa            | 498,198.91                       | 502,636.50                     | 15.29                              | 498,504.02                    | 502,226.50                  | 489.13                          | 502,715.63                            |
| NHCRWA 2008 DSRF | 912828T67  | United States                         | 10/31/2021     | AA+        | Aaa            | 997,085.90                       | 1,007,891.00                   | 4,178.18                           | 997,458.37                    | 1,006,953.00                | 5,248.62                        | 1,012,201.62                          |
| NHCRWA 2008 DSRF | 3133EJT74  | Farm Credit System                    | 11/15/2021     | AA+        | Aaa            | 700,532.06                       | 714,622.55                     | 6,286.39                           | 700,468.29                    | 712,887.97                  | 8,065.56                        | 720,953.52                            |
| NHCRWA 2008 DSRF | 912828U81  | United States                         | 12/31/2021     | AA+        | Aaa            | 752,022.63                       | 761,953.50                     | 2,486.19                           | 751,816.05                    | 760,781.25                  | 3,770.72                        | 764,551.97                            |
| NHCRWA 2008 DSRF | 3137EADB2  | Freddie Mac                           | 01/13/2022     | AA+        | Aaa            | 1,205,780.29                     | 1,223,661.55                   | 3,800.00                           | 1,205,214.39                  | 1,221,592.16                | 6,175.00                        | 1,227,767.16                          |
| NHCRWA 2008 DSRF | 3133ELKN3  | Farm Credit System                    | 01/28/2022     | AA+        | Aaa            | 750,089.59                       | 759,928.88                     | 1,065.63                           | 750,081.21                    | 758,824.71                  | 2,034.38                        | 760,859.09                            |
| NHCRWA 2008 DSRF | 912828M7   | United States                         | 04/15/2022     | AA+        | Aaa            | 704,720.92                       | 716,706.90                     | 5,927.88                           | 704,366.99                    | 715,695.40                  | 7,269.23                        | 722,964.63                            |
| NHCRWA 2008 DSRF | 313379Q69  | Federal Home Loan Banks               | 06/10/2022     | AA+        | Aaa            | 852,884.38                       | 871,540.16                     | 4,064.06                           | 852,694.17                    | 870,209.17                  | 5,569.27                        | 875,778.44                            |
| NHCRWA 2008 DSRF | 9128282S8  | United States                         | 08/31/2022     | AA+        | Aaa            | 526,148.34                       | 536,648.70                     | 23.18                              | 526,084.21                    | 536,094.83                  | 741.85                          | 536,836.67                            |
| NHCRWA 2008 DSRF | 9128282W9  | United States                         | 09/30/2022     | AA+        | Aaa            | 1,027,436.41                     | 1,027,344.00                   | 7,829.67                           | 1,025,961.96                  | 1,026,055.00                | 51.23                           | 1,026,106.23                          |
| NHCRWA 2008 DSRF | 3135G0T78  | Federal National Mortgage Association | 10/05/2022     | AA+        | Aaa            | 1,028,344.78                     | 1,029,627.52                   | 8,111.11                           | 1,026,835.53                  | 1,027,875.62                | 9,777.78                        | 1,037,653.40                          |
| NHCRWA 2008 DSRF | 912828YK0  | United States                         | 10/15/2022     | AA+        | Aaa            | 573,010.25                       | 586,387.88                     | 2,975.70                           | 573,113.09                    | 585,915.80                  | 3,649.04                        | 589,564.84                            |
| NHCRWA 2008 DSRF | 912828YW4  | United States                         | 12/15/2022     | AA+        | Aaa            | 749,451.65                       | 769,775.25                     | 2,544.64                           | 749,477.36                    | 768,896.25                  | 3,582.59                        | 772,478.84                            |
| NHCRWA 2008 DSRF | 3137EAEQ8  | Freddie Mac                           | 04/20/2023     | AA+        | Aaa            | 1,253,195.87                     | 1,255,922.55                   | 1,705.73                           | 1,253,068.91                  | 1,254,698.56                | 2,096.35                        | 1,256,794.92                          |
| NHCRWA 2008 DSRF | 3137EAES4  | Freddie Mac                           | 06/26/2023     | AA+        | Aaa            | 749,859.77                       | 750,108.98                     | 338.54                             | 749,864.90                    | 750,591.59                  | 494.79                          | 751,086.38                            |
| NHCRWA 2008 DSRF | 3135G05G4  | Federal National Mortgage Association | 07/10/2023     | AA+        | Aaa            | 1,248,534.09                     | 1,251,010.39                   | 442.71                             | 1,248,587.07                  | 1,250,898.81                | 703.13                          | 1,251,601.94                          |
| NHCRWA 2008 DSRF | 3137EAEV7  | Freddie Mac                           | 08/24/2023     | AA+        | Aaa            | 1,500,229.11                     | 1,501,153.61                   | 72.92                              | 1,500,221.23                  | 1,500,444.03                | 385.42                          | 1,500,829.45                          |
| NHCRWA 2008 DSRF | 3137EAF22  | Freddie Mac                           | 12/04/2023     | AA+        | Aaa            | 950,000.00                       | 948,162.57                     | 573.96                             | 950,000.00                    | 948,532.58                  | 771.88                          | 949,304.46                            |
| NHCRWA 2008 DSRF | ---        | ---                                   | 07/01/2022     | AA+        | Aaa            | 19,613,372.49                    | 19,772,429.92                  | 75,218.14                          | 19,630,133.34                 | 19,772,144.03               | 76,649.33                       | 19,848,793.36                         |



NHCRWA 2008 Capital Contributi

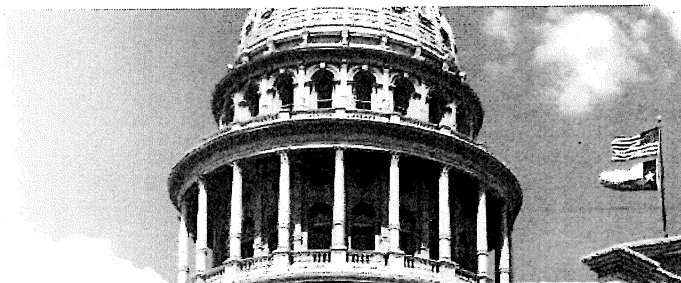
| Account                        | Identifier | Ultimate Parent Description | Final Maturity | S&P Rating | Moody's Rating | Amortized Cost<br>Beginning Date | Market Value<br>Beginning Date | Accrued Interest<br>Beginning Date | Amortized Cost<br>Ending Date | Market Value Ending<br>Date | Accrued Interest<br>Ending Date | Market Value +<br>Accrued Ending Date |
|--------------------------------|------------|-----------------------------|----------------|------------|----------------|----------------------------------|--------------------------------|------------------------------------|-------------------------------|-----------------------------|---------------------------------|---------------------------------------|
| NHCRWA 2008 Capital Contributi | 9127962F5  | United States               | 03/25/2021     | AA+        | Aaa            | 1,999,810.80                     | 1,999,950.00                   | 0.00                               | 0.00                          | 0.00                        | 0.00                            | 0.00                                  |
| NHCRWA 2008 Capital Contributi | 31846V443  | U.S. Bancorp                | 03/31/2021     | AAAm       | Aaa            | 2,047,311.77                     | 2,047,311.77                   | 0.00                               | 6,607,597.66                  | 6,607,597.66                | 0.00                            | 6,607,597.66                          |
| NHCRWA 2008 Capital Contributi | CCYUSD     | ---                         | 03/31/2021     | AA+        | Aaa            | 2,531,259.50                     | 2,531,259.50                   | 0.00                               | 25.66                         | 25.66                       | 0.00                            | 25.66                                 |
| NHCRWA 2008 Capital Contributi | 9127962Q1  | United States               | 04/22/2021     | AA+        | Aaa            | 1,999,584.29                     | 1,999,906.00                   | 0.00                               | 1,999,832.12                  | 1,999,986.00                | 0.00                            | 1,999,986.00                          |
| NHCRWA 2008 Capital Contributi | 912828R77  | United States               | 05/31/2021     | AA+        | Aaa            | 2,006,145.13                     | 2,006,422.00                   | 6,875.00                           | 2,004,051.73                  | 2,004,300.00                | 9,217.03                        | 2,013,517.03                          |
| NHCRWA 2008 Capital Contributi | 9127963H0  | United States               | 06/17/2021     | AA+        | Aaa            | 1,999,127.00                     | 1,999,684.00                   | 0.00                               | 1,999,377.58                  | 1,999,934.00                | 0.00                            | 1,999,934.00                          |
| NHCRWA 2008 Capital Contributi | 9127963S6  | United States               | 07/15/2021     | AA+        | Aaa            | 1,998,866.66                     | 1,999,622.00                   | 0.00                               | 1,999,125.00                  | 1,999,920.00                | 0.00                            | 1,999,920.00                          |
| NHCRWA 2008 Capital Contributi | 9127964B2  | United States               | 08/12/2021     | AA+        | Aaa            | 1,998,861.11                     | 1,999,476.00                   | 0.00                               | 1,999,076.39                  | 1,999,822.00                | 0.00                            | 1,999,822.00                          |
| NHCRWA 2008 Capital Contributi | 9128285A4  | United States               | 09/15/2021     | AA+        | Aaa            | 2,231,096.51                     | 2,231,882.40                   | 27,910.22                          | 2,226,198.33                  | 2,226,725.60                | 2,794.84                        | 2,229,520.44                          |
| NHCRWA 2008 Capital Contributi | 9128285F3  | United States               | 10/15/2021     | AA+        | Aaa            | 2,034,141.79                     | 2,034,844.00                   | 21,641.48                          | 2,029,481.78                  | 2,030,312.00                | 26,538.46                       | 2,056,850.46                          |
| NHCRWA 2008 Capital Contributi | 912828RR3  | United States               | 11/15/2021     | AA+        | Aaa            | 2,026,237.17                     | 2,027,344.00                   | 11,712.71                          | 2,023,061.62                  | 2,024,218.00                | 15,138.12                       | 2,039,356.12                          |
| NHCRWA 2008 Capital Contributi | 9128285R7  | United States               | 12/15/2021     | AA+        | Aaa            | 2,039,731.40                     | 2,040,078.00                   | 10,961.54                          | 2,035,456.27                  | 2,036,016.00                | 15,432.69                       | 2,051,448.69                          |
| NHCRWA 2008 Capital Contributi | 912828H86  | United States               | 01/31/2022     | AA+        | Aaa            | 2,127,039.64                     | 2,126,905.20                   | 2,523.48                           | 2,124,523.12                  | 2,124,855.60                | 5,220.99                        | 2,130,076.59                          |
| NHCRWA 2008 Capital Contributi | ---        | ---                         | 07/28/2021     | AA+        | Aaa            | 27,039,212.77                    | 27,044,684.87                  | 81,624.43                          | 27,047,807.26                 | 27,053,712.52               | 74,342.14                       | 27,128,054.66                         |

Summary

| Account | Identifier | Ultimate Parent Description | Final Maturity | S&P Rating | Moody's Rating | Amortized Cost<br>Beginning Date | Market Value<br>Beginning Date | Accrued Interest<br>Beginning Date | Amortized Cost<br>Ending Date | Market Value Ending<br>Date | Accrued Interest<br>Ending Date | Market Value +<br>Accrued Ending Date |
|---------|------------|-----------------------------|----------------|------------|----------------|----------------------------------|--------------------------------|------------------------------------|-------------------------------|-----------------------------|---------------------------------|---------------------------------------|
| ---     | ---        | ---                         | 06/10/2022     | AA+        | Aaa            | 224,653,455.60                   | 226,384,052.00                 | 799,788.02                         | 224,850,787.37                | 226,387,092.55              | 795,537.76                      | 227,182,630.31                        |

\* Grouped by: Account  
\* Groups Sorted by: Account  
\* Weighted by: Ending Market Value + Accrued





## Monthly Newsletter: April 2021

### ANNOUNCEMENTS

**We welcome the following entities who joined TexPool in March 2021:**

#### **TexPool**

City of Garland TX Zions Bancorporation NA aba  
Amegy Bank as TTEE

#### **TexPool Prime**

No New Participants

### Upcoming Events

April 19 2021 – April 22 2021  
49th Annual County Treasurers Continuing  
Education Seminar

**Embassy Suites San Marcos Hotel &  
Conference Center, San Marcos, Texas**

June 14, 2021 – June 16, 2021,  
TASBO Summer Solutions Conference  
**Round Rock**

June 17, 2021 – June 19, 2021  
AWBD Annual Conference  
**Henry B. Gonzalez Convention Center  
San Antonio, Texas**

### TexPool Advisory Board Members

|                     |                 |
|---------------------|-----------------|
| David Garcia        | Jerry Dale      |
| Patrick Krishock    | David Landeros  |
| Belinda Weaver      | Sharon Matthews |
| Deborah Lauder milk | Vivian Wood     |

Overseen by the State of Texas Comptroller  
of Public Accounts Glenn Hegar.

Operated under the supervision of the  
Texas Treasury Safekeeping Trust Company

## Economic and Market Commentary: Questions, questions

April 1, 2021

With concern about inflation on many minds, Federal Reserve officials took countless questions last month about when they will scale back accommodative policy. To Chair Jerome Powell, it probably sounded like kids in the back seat of a car on a trip—“Are we there yet?”—to which he had to repeat, “Not yet!”

Policymakers do not think that the backup in long rates means inflation is even on the tarmac, let alone ready to take off. In testimony on Capitol Hill, Chair Powell said the surge in the 10-year Treasury yield had more to do with the progress of vaccinations and expectations of growth. The Fed is not going to change policy for “some time,” the same indefinite period in which it will let core inflation exceed 2%. Projections from the March Federal Open Market Committee meeting showed a slight shift earlier to a 2022 timeframe, but that’s it. The news from the meeting that disappointed cash managers was that the committee didn’t lift its rates on overnight lending.

The rise in the 10-year yield so dominated the financial press, you’d think the \$1.9 trillion American Rescue Plan didn’t pass. So far, most of the dispersed dollars have gone to personal stimulus checks, but the Plan provides substantial direct aid

(continued page 6)

### Performance as of March 31, 2021

|                                     | TexPool             | TexPool Prime       |
|-------------------------------------|---------------------|---------------------|
| Current Invested Balance            | \$26,406,501,473.55 | \$9,633,215,680.86  |
| Weighted Average Maturity**         | 29                  | 51                  |
| Weighted Average Life**             | 89                  | 59                  |
| Net Asset Value                     | 1.00017             | 1.00008             |
| Total Number of Participants        | 2,644               | 441                 |
| Management Fee on Invested Balance  | 0.0450%             | 0.0550%             |
| Interest Distributed                | \$436,469.97        | \$784,187.10        |
| Management Fee Collected            | \$1,042,733.57      | \$438,380.91        |
| Standard & Poor's Current Rating    | AAAm                | AAAm                |
| <b>Month Averages</b>               |                     |                     |
| Average Invested Balance            | \$27,359,749,358.29 | \$10,092,786,950.20 |
| Average Monthly Rate*               | 0.02%               | 0.09%               |
| Average Weighted Average Maturity** | 30                  | 52                  |
| Average Weighted Average Life**     | 87                  | 60                  |

\*This average monthly rate for TexPool Prime for each date may reflect a waiver of some portion or all of each of the management fees.

\*\*See page 2 for definitions.

Past performance is no guarantee of future results.

# TexSTAR

## MONTHLY NEWSLETTER

### MARCH 2021



## PERFORMANCE

### As of March 31, 2021

### March Averages

|                                       |                    |   |                    |
|---------------------------------------|--------------------|---|--------------------|
| Current Invested Balance              | \$9,103,231,627.43 | Average Invested Balance  | \$9,294,830,901.64 |
| Weighted Average Maturity (1)         | 40 Days            | Average Monthly Yield, on a simple basis  | 0.0216%            |
| Weighted Average Maturity (2)         | 77 Days            | Average Weighted Maturity (1)*  | 47 Days            |
| Net Asset Value                       | 1.000154           | Average Weighted Life (2)*  | 86 Days            |
| Total Number of Participants          | 935                | Definition of Weighted Average Maturity (1) & (2)   |                    |
| Management Fee on Invested Balance    | 0.06%*             | (1) This weighted average maturity calculation uses the SEC Rule 2a-7 definition for stated maturity for any floating rate instrument held in the portfolio to determine the weighted average maturity for the pool. This Rule specifies that a variable rate instrument to be paid in 397 calendar days or less shall be deemed to have a maturity equal to the period remaining until the next readjustment of the interest rate. |                    |
| Interest Distributed                  | \$644,202.21       | (2) This weighted average maturity calculation uses the final maturity of any floating rate instruments held in the portfolio to calculate the weighted average maturity for the pool.  |                    |
| Management Fee Collected              | \$473,644.15       | The maximum management fee authorized for the TexSTAR Cash Reserve Fund is 12 basis points. This fee may be waived in full or in part in the discretion of the TexSTAR co-administrators at any time as provided for in the TexSTAR Information Statement.  |                    |
| % of Portfolio Invested Beyond 1 Year | 3.45%              |   |                    |
| Standard & Poor's Current Rating      | AAAm               |   |                    |

Rates reflect historical information and are not an indication of future performance.

## NEW PARTICIPANTS

We would like to welcome the following entity who joined the TexSTAR program in March:

\* Liberty Hill Independent School District

## PROGRAM UPDATES

### TexSTAR Board Updates

The TexSTAR Governing Board will have some new faces starting in April, as long-time Board President William Chapman and Vice President Nell Lange have announced their retirement. Bill and Nell were original Governing Board members at TexSTAR's inception in 2002 and have dedicated their time and support to TexSTAR for the past 20+ years. They have left an indelible mark on the TexSTAR program which has benefited from their leadership and commitment. We are sad to see them go but wish them the very best.

We are proud to announce that the TexSTAR Governing Board has appointed Advisory Board member Monte Mercer, Deputy Executive Director of the North Central Texas Council of Governments, as President and David Pate, Chief Financial Officer of Richardson ISD, as Vice President. In addition, the Board has appointed Anita Cothran, Chief Financial Officer of the City of Frisco, as Treasurer and Bret Starr, Finance Director with the City of Irving, to the TexSTAR Advisory Board. We also want to thank Advisory Board Member Becky Brooks, Chief Financial Officer with the City of Grand Prairie, who retires this year for her service to TexSTAR and wish her well. We are excited to welcome our new board members who are recognized leaders in Texas public finance and look forward to their leadership of the TexSTAR program.

### TexSTAR Internet Transaction System Upgrade

TexSTAR will be upgrading to a new version of our internet transaction system in early May. The system will maintain the same basic functionality that participants enjoy today. The upgrade will provide a more modern interface with flexibility for participants to tailor how they view their TexSTAR data. We have upgraded the overall platform infrastructure and real time connectivity to allow for quicker trading and allow for more customization in your everyday reporting. TexSTAR continues to leverage J.P. Morgan's state of the art technology infrastructure with its own dedicated cyber security team to keep your information secure including password protected multi factor authentication, automatic time-out for inactivity, and mandatory password resets. Please watch your email for information over the next few weeks regarding the conversion date and updated system user guide. The upgrade will not require any changes to your log in or account information. Should you have any questions in advance of receiving this data, please contact TexSTAR Participant Services at 1-800-839-7827.



**Member Securities and Safekeeping Services Joint Custody Receipt**

21563 - North Harris County Regional Water Authority  
3648 CYPRESS CREEK PKWY, STE 110  
HOUSTON, TX 770683609

As of 3/31/2021



APR 5 2021 PM 3:45

| Acct. | Pledgor                                    | FHLB TCD<br>Reference Number | Cusip            | Description             | Interest<br>Rate | Maturity Date  | Amount Pledged | Current Principal | Last Update | Market Value  | Market<br>Price |
|-------|--|------------------------------|------------------|-------------------------|------------------|----------------|----------------|-------------------|-------------|---------------|-----------------|
| 4435  | Zions Bancorporation, National Association |                              | 36179TKK0        | GOVT NAT MTG ASSN II    | 1.6250           | 10/20/2047     | 4,840,000.00   | 1,288,825.16      | 3/31/2021   | 1,337,478.31  | 103.775         |
| 4435  | Zions Bancorporation, National Association |                              | 36179TMB8        | GOVT NAT MTG ASSN II    | 1.6250           | 11/20/2047     | 1,900,000.00   | 591,328.96        | 3/31/2021   | 613,675.28    | 103.779         |
| 4435  | Zions Bancorporation, National Association |                              | 36179TMT9        | GOVT NAT MTG ASSN II    | 2.5000           | 12/20/2032     | 1,970,000.00   | 932,563.21        | 3/31/2021   | 970,835.60    | 104.104         |
| 4435  | Zions Bancorporation, National Association |                              | 36179TPB5        | GOVT NAT MTG ASSN II    | 1.6250           | 12/20/2047     | 1,410,000.00   | 479,444.13        | 3/31/2021   | 497,562.33    | 103.779         |
| 4435  | Zions Bancorporation, National Association |                              | 36179TS30        | GOVT NAT MTG ASSN II    | 2.5000           | 2/20/2048      | 810,000.00     | 307,334.19        | 3/31/2021   | 318,275.28    | 103.560         |
| 4435  | Zions Bancorporation, National Association |                              | 36179TUV5        | GOVT NAT MTG ASSN II    | 2.5000           | 3/20/2048      | 725,000.00     | 247,111.20        | 3/31/2021   | 255,987.44    | 103.592         |
| 4435  | Zions Bancorporation, National Association |                              | 36179UAH5        | GOVT NAT MTG ASSN II    | 3.0000           | 8/20/2048      | 23,155,000.00  | 9,733,709.26      | 3/31/2021   | 10,054,434.98 | 103.295         |
| 4435  | Zions Bancorporation, National Association |                              | 36179UEM0        | GOVT NAT MTG ASSN II    | 3.5000           | 9/20/2048      | 5,680,000.00   | 1,690,817.34      | 3/31/2021   | 1,755,423.48  | 103.821         |
| 4435  | Zions Bancorporation, National Association |                              | 36179UGQ9        | GOVT NAT MTG ASSN II    | 3.5000           | 11/20/2048     | 4,490,798.00   | 1,414,263.39      | 3/31/2021   | 1,468,868.10  | 103.861         |
| 4435  | Zions Bancorporation, National Association |                              | 36179ULA8        | GOVT NAT MTG ASSN II    | 3.0000           | 1/20/2049      | 4,775,000.00   | 1,724,312.95      | 3/31/2021   | 1,784,888.07  | 103.513         |
| 4435  | Zions Bancorporation, National Association |                              | 36179VHF0        | GOVT NAT MTG ASSN II    | 2.5000           | 3/20/2050      | 6,150,000.00   | 2,410,811.25      | 3/31/2021   | 2,476,337.10  | 102.718         |
| 4435  | Zions Bancorporation, National Association |                              | 38376RB70        | GOVT NAT MTG ASSN REMIC | 0.8940           | 10/20/2066     | 885,000.00     | 688,582.39        | 3/31/2021   | 698,927.99    | 101.502         |
|       | * Member                                   |                              | # of Securities: |                         | 12               | Amount Totals: | 56,790,798.00  | 21,509,103.43     |             | 22,232,693.96 |                 |
|       | ** Agency                                  |                              | # of Securities: |                         | 12               | Amount Totals: | 56,790,798.00  | 21,509,103.43     |             | 22,232,693.96 |                 |

3

[illegible]



| NORTH HARRIS COUNTY REGIONAL WATER AUTHORITY<br>OPERATING BUDGET PLANNING REPORT<br>FISCAL YEAR 2021 |                                |                                |                                |
|--|--------------------------------|--------------------------------|--------------------------------|
|  | PROJECTED<br>TOTAL<br><br>2020 | ORIGINAL<br>BUDGET<br><br>2020 | PROPOSED<br>BUDGET<br><br>2021 |
| <b>REVENUES</b>  |                                |                                |                                |
| Surface Water and Groundwater Revenues   | \$ 107,897,861                 | \$ 106,091,667                 | \$ 114,870,833                 |
| Interest Earned  | \$ 5,393,013                   | \$ 5,000,000                   | \$ 500,000                     |
| <b>TOTAL REVENUES</b>  | <b>\$ 113,290,874</b>          | <b>\$ 111,091,667</b>          | <b>\$ 115,370,833</b>          |
| <b>EXPENSES</b>  |                                |                                |                                |
| DEBT SERVICE EXPENSE & RESERVES  | \$ 72,585,585                  | \$ 72,585,585                  | \$ 87,119,933                  |
| <b>O&amp;M EXPENSES:</b>   |                                |                                |                                |
| OPERATIONS & MAINTENANCE   | \$ 17,300,578                  | \$ 23,581,000                  | \$ 23,366,000                  |
| <b>TOTAL O&amp;M</b>   | <b>\$ 17,300,578</b>           | <b>\$ 23,581,000</b>           | <b>\$ 23,366,000</b>           |
| <b>ADMINISTRATIVE EXPENSES:</b>  |                                |                                |                                |
| FINANCIAL SERVICES   | \$ 64,500                      | \$ 65,000                      | \$ 70,000                      |
| ENGINEERING SERVICES   | \$ 20,000                      | \$ 50,000                      | \$ 50,000                      |
| LEGAL SERVICES   | \$ 213,521                     | \$ 288,500                     | \$ 256,500                     |
| LEGISLATIVE CONSULTANT   | \$ 130,000                     | \$ 131,500                     | \$ 131,500                     |
| COMMUNICATION SERVICES   | \$ 369,908                     | \$ 390,393                     | \$ 376,093                     |
| MANAGEMENT SERVICES  | \$ 2,418,682                   | \$ 3,114,836                   | \$ 2,864,952                   |
| MISCELLANEOUS SERVICES   | \$ 859,262                     | \$ 520,000                     | \$ 520,000                     |
| CAPITAL OUTLAY   | \$ 54,804                      | \$ 75,000                      | \$ 100,000                     |
| <b>TOTAL ADMINISTRATIVE</b>  | <b>\$ 4,130,677</b>            | <b>\$ 4,635,229</b>            | <b>\$ 4,369,045</b>            |
| <b>TOTAL EXPENSES</b>  | <b>\$ 94,016,840</b>           | <b>\$ 100,801,814</b>          | <b>\$ 114,854,978</b>          |
| <b>NET REVENUES OVER (UNDER) EXPENSES</b>  | <b>\$ 19,274,034</b>           | <b>\$ 10,289,853</b>           | <b>\$ 515,856</b>              |
| <b>BEGINNING FUND BALANCE</b>  | <b>\$ 271,280,186</b>          | <b>\$ 222,660,429</b>          | <b>\$ 290,554,220</b>          |
| <b>BUDGETED ENDING FUND BALANCE</b>  | <b>\$ 290,554,220</b>          | <b>\$ 232,950,282</b>          | <b>\$ 291,070,075</b>          |

# North Harris County Regional Water Authority

Check/Voucher Register

## 1110 - Cash in Bank - Amegy Operating acct

From 3/1/2021 Through 3/31/2021

| Check Date | Check Number    | Vendor Name  | Check Amount |
|------------|-----------------|--|--------------|
| 3/1/2021   | 7114            | KELLY P. FESSLER                                       | 148.60       |
| 3/1/2021   | 7115            | JAMES PULLIAM  | 164.42       |
| 3/1/2021   | 7116            | ALAN J. RENDL  | 613.10       |
| 3/1/2021   | 7117            | LENOX SIGLER   | 138.52       |
| 3/1/2021   | 7118            | AECOM USA GROUP INC.                                   | 10,369.80    |
| 3/1/2021   | 7119            | BLUE CROSS OF TEXAS                                    | 12,539.89    |
| 3/1/2021   | 7120            | BRESNENASSOCIATES, INC.                                | 10,833.33    |
| 3/1/2021   | 7121            | CONSTELLATION NEW ENERGY, INC.                         | 47,764.58    |
| 3/1/2021   | 7122            | ESRI, INC.   | 14,158.20    |
| 3/1/2021   | 7123            | HARRIS COUNTY  | 209,771.93   |
| 3/1/2021   | 7124            | CITY OF HOUSTON UTILITY CUSTOMER SERVICE               | 3,274.34     |
| 3/1/2021   | 7125            | CITY OF HOUSTON UTILITY CUSTOMER SERVICE               | 892,543.35   |
| 3/1/2021   | 7126            | INFRAMARK LLC  | 324,006.39   |
| 3/1/2021   | 7127            | PAYNE COMMUNICATIONS                                   | 7,100.00     |
| 3/1/2021   | 7128            | RADCLIFFE BOBBITT ADAMS POLLEY PLLC                    | 16,551.99    |
| 3/1/2021   | 7129            | TRISON PROPERTIES                                      | 13,267.63    |
| 3/15/2021  | 401W03/15/2021  | VANTAGEPOINT TRANSFER AGENTS - 401                     | 2,813.36     |
| 3/15/2021  | 401X03/15/2021  | VANTAGEPOINT TRANSFER AGENTS - 401                     | 7,290.06     |
| 3/15/2021  | 457W03/15/2021  | VANTAGEPOINT TRANSFER AGENTS - 457                     | 8,099.20     |
| 3/15/2021  | EFTPS03/15/2021 | INTERNAL REVENUE SERVICE                               | 12,019.76    |
| 3/15/2021  | FSA03/15/2021   | CLARITY BENEFIT SOLUTIONS                              | 189.17       |
| 3/31/2021  | 401W03/31/2021  | VANTAGEPOINT TRANSFER AGENTS - 401                     | 2,806.36     |
| 3/31/2021  | 401X03/31/2021  | VANTAGEPOINT TRANSFER AGENTS - 401                     | 7,433.78     |
| 3/31/2021  | 457W03/31/2021  | VANTAGEPOINT TRANSFER AGENTS - 457                     | 8,220.30     |
| 3/31/2021  | EFTPS03/02/2021 | INTERNAL REVENUE SERVICE                               | 160.68       |
| 3/31/2021  | EFTPS03/31/2021 | INTERNAL REVENUE SERVICE                               | 12,253.44    |
| 3/31/2021  | FSA03/31/2021   | CLARITY BENEFIT SOLUTIONS                              | 189.17       |
| 3/31/2021  | TWC03/31/2021   | TEXAS WORKFORCE COMMISSION                             | 1,584.00     |
|            |                 | Total 1110 - Cash in<br>Bank - Amegy<br>Operating acct | 1,626,305.35 |



# North Harris County Regional Water Authority

Check/Voucher Register

## 1115 - Cash in Bank - Amegy Cap Proj 2003

From 3/1/2021 Through 3/31/2021

| Check Date  | Check Number | Vendor Name                              | Check Amount |
|---|--------------|--|--------------|
| 3/1/2021  | 8853         | ACCLAIM ENERGY, LTD                      | 5,346.00     |
| 3/1/2021  | 8854         | AECOM USA GROUP INC.                     | 381,842.63   |
| 3/1/2021  | 8855         | ARCADIS                                  | 13,746.71    |
| 3/1/2021  | 8856         | AURORA TECHNICAL SERVICES, LLC           | 197,571.75   |
| 3/1/2021  | 8857         | AVILES ENGINEERING CORPORATION           | 12,375.50    |
| 3/1/2021  | 8858         | BINKLEY & BARFIELD, INC.                 | 144,224.68   |
| 3/1/2021  | 8859         | CAROLLO                                  | 133,427.01   |
| 3/1/2021  | 8860         | DANIEL W. KRUEGER, P.E.                  | 4,062.50     |
| 3/1/2021  | 8861         | DANNENBAUM ENGINEERING CORPORATION       | 69,076.70    |
| 3/1/2021  | 8862         | E. P. BRADY, INC.                        | 490,658.65   |
| 3/1/2021  | 8863         | FREESE AND NICHOLS                       | 123,903.99   |
| 3/1/2021  | 8864         | TENESHIA HUDSPETH, HARRIS COUNTY CLERK   | 9,456.56     |
| 3/1/2021  | 8865         | HR GREEN, INC.                           | 114,786.46   |
| 3/1/2021  | 8866         | IDS ENGINEERING GROUP                    | 147,315.08   |
| 3/1/2021  | 8867         | JONES & CARTER, INC.                     | 104,333.55   |
| 3/1/2021  | 8868         | LOCKWOOD, ANDREWS & NEWNAM, INC.         | 33,175.80    |
| 3/1/2021  | 8869         | LJA ENGINEERING                          | 11,576.00    |
| 3/1/2021  | 8870         | McKIM & CREED                            | 3,887.40     |
| 3/1/2021  | 8871         | PAS PROPERTY ACQUISITION SERVICES, LLC   | 113,549.20   |
| 3/1/2021  | 8872         | UNIVERSAL FIELD SERVICES, INC.           | 26,334.86    |
| 3/1/2021  | 8873         | V&A CONSULTING ENGINEERS INC             | 35,301.85    |
| 3/4/2021  | 8874         | BENCEL ENTERPRISES, INC.                 | 4,386.00     |
| 3/8/2021  | 8875         | SAV ENTERPRISES, LLC                     | 5,000.00     |
| 3/9/2021  | 8876         | ABEL SANCHEZ AND ELVIA GARCIA            | 1,500.00     |
| 3/9/2021  | 8877         | ROGELIO SOTO AND ANTONIA SOTO            | 1,500.00     |
| 3/16/2021   | 8878         | CENTERPOINT ENERGY HOUSTON ELECTRIC, LLC | 1,600.00     |
| 3/19/2021   | 8879         | UNIVERSITY CROSSROADS, LLC               | 7,500.00     |
| Total 1115 - Cash in<br>Bank - Amegy Cap<br>Proj 2003 |              |  | 2,197,438.88 |

# North Harris County Regional Water Authority

Check/Voucher Register

## 1120 - Cash in Bank - Amegy Admin. Expense

From 3/1/2021 Through 3/31/2021

| Check Date | Check Number | Vendor Name                            | Check Amount |
|------------|--------------|--|--------------|
| 3/9/2021   | 18222        | ADOBE INC.                             | 119.94       |
| 3/9/2021   | 18223        | ALDINE ISD                             | 87.09        |
| 3/9/2021   | 18224        | AT&T                                   | 380.71       |
| 3/9/2021   | 18225        | AT&T                                   | 154.85       |
| 3/9/2021   | 18226        | AT&T                                   | 603.71       |
| 3/9/2021   | 18227        | AT&T MOBILITY                          | 174.08       |
| 3/9/2021   | 18228        | CALDWELL NETWORK SERVICES, LLC.        | 1,137.50     |
| 3/9/2021   | 18229        | CAVALLO ENERGY TEXAS LLC               | 59.29        |
| 3/9/2021   | 18230        | CENTERPOINT ENERGY                     | 65.08        |
| 3/9/2021   | 18231        | CLARITY BENEFIT SOLUTIONS              | 47.50        |
| 3/9/2021   | 18232        | MIDDLEMAN MESSENGER                    | 88.00        |
| 3/9/2021   | 18233        | NAPCO CHEMICAL COMPANY                 | 1,000.00     |
| 3/9/2021   | 18234        | PERSONALIZED COMMUNICATIONS, INC.      | 157.98       |
| 3/9/2021   | 18235        | PITNEY BOWES, INC.                     | 250.86       |
| 3/9/2021   | 18236        | PURCHASE POWER                         | 503.50       |
| 3/9/2021   | 18237        | QUILL                                  | 582.94       |
| 3/9/2021   | 18238        | RICOH USA, INC.                        | 1,086.13     |
| 3/9/2021   | 18239        | SIMPLY AQUATICS, INC.                  | 807.50       |
| 3/9/2021   | 18240        | TEXAS COMMISSION ENVIRONMENTAL QUALITY | 0.00         |
| 3/24/2021  | 18241        | AMEGY BANK OF TEXAS                    | 500.00       |
| 3/24/2021  | 18242        | BANKCARD CENTER                        | 37.39        |
| 3/24/2021  | 18243        | BANKCARD CENTER                        | 643.35       |
| 3/24/2021  | 18244        | AT&T                                   | 2,587.64     |
| 3/24/2021  | 18245        | AT&T                                   | 154.85       |
| 3/24/2021  | 18246        | AT&T                                   | 566.24       |
| 3/24/2021  | 18247        | AT&T MOBILITY                          | 174.08       |
| 3/24/2021  | 18248        | ASSOCIATION OF WATER BOARD DIRECTORS   | 750.00       |
| 3/24/2021  | 18249        | AMERICAN WATER WORKS ASSOCIATION       | 231.00       |
| 3/24/2021  | 18250        | DELL MARKETING, L.P.                   | 2,411.16     |
| 3/24/2021  | 18251        | EDP                                    | 500.00       |
| 3/24/2021  | 18252        | GTOT                                   | 75.00        |
| 3/24/2021  | 18253        | ANN HARRIS BENNETT                     | 88.71        |
| 3/24/2021  | 18254        | HARRIS COUNTY MUD 217                  | 200.10       |
| 3/24/2021  | 18255        | THE HOUSTON CHRONICLE                  | 70.00        |
| 3/24/2021  | 18256        | JOHNSON CONTROLS SECURITY SOLUTIONS    | 410.68       |
| 3/24/2021  | 18257        | MIDDLEMAN MESSENGER                    | 192.50       |
| 3/24/2021  | 18258        | NAPCO CHEMICAL COMPANY                 | 5,409.60     |
| 3/24/2021  | 18259        | QUILL                                  | 752.41       |
| 3/24/2021  | 18260        | SAME                                   | 75.00        |
| 3/24/2021  | 18261        | SPRINT                                 | 1,568.57     |
| 3/24/2021  | 18262        | TEXAS WATER                            | 200.00       |
| 3/24/2021  | 18263        | THE TEXAS NETWORK                      | 1,368.75     |
| 3/24/2021  | 18264        | THE TEXAS NETWORK                      | 2,899.00     |



# North Harris County Regional Water Authority

Check/Voucher Register

## 1120 - Cash in Bank - Amegy Admin. Expense

From 3/1/2021 Through 3/31/2021

| Check Date   | Check Number   | Vendor Name         | Check Amount |
|--|----------------|---------------------|--------------|
| 3/24/2021  | 18265          | THE TEXAS NETWORK   | 1,415.00     |
| 3/24/2021  | 18266          | BLUE CROSS OF TEXAS | 2,586.12     |
| 3/30/2021  | 18267          | ALDINE ISD          | 1.64         |
| 3/30/2021  | 18268          | AMEGY BANK OF TEXAS | 1,500.00     |
| 3/30/2021  | 18269          | DOUGLAS HAUDE       | 525.58       |
| 3/30/2021  | 18270          | HAMLET HOVSEPIAN    | 345.00       |
| 3/30/2021  | 18271          | JUN CHANG           | 1,325.00     |
| 3/30/2021  | 18272          | MARK EVANS          | 545.00       |
| 3/30/2021  | 18273          | RICOH USA, INC.     | 1,086.13     |
| 3/30/2021  | 18274          | SHOWRI NANDAGIRI    | 225.00       |
| 3/31/2021  | MAR 2021 GUARD | GUARDIAN            | 4,919.05     |
| Total 1120 - Cash in<br>Bank - Amegy<br>Admin. Expense |                |                     | 43,646.21    |
| Report Total   |                |                     | 3,867,390.44 |